



#### Next General Meetings:

Monday  
26th May, 2025

Monday  
23rd June 2025

#### In this issue

President's Report  
Club Yearly Calendar  
Events Calendar  
Training Calendar  
Club Merchandise  
For Sale / Buy

#### Reports -

Clean Up Australia  
Coopers Brewery Tour  
RFDS Tour  
Goolwa Beach Run

#### Features -

Service Provider of Month  
Life Membership Review

The Secretary,  
PO Box 252  
Kent Town SA 5071

Email:  
secretary@tlccsa.asn.au

**www.tlccsa.asn.au**

Print post approved 100018657

Voice of the Toyota LandCruiser Club of Australia (SA) Inc

May 2025

# LandCruising Australia Wide



**TLCCSA Members at the Victorian TLCC Conference  
Victorian High Country**



A MEMBER OF FWDSA



# Cornes Toyota



**CLUB SPONSOR**

[www.facebook.com/ToyotaLandCruiserClubSouthAustralia](https://www.facebook.com/ToyotaLandCruiserClubSouthAustralia)



# We Fix 4WD's

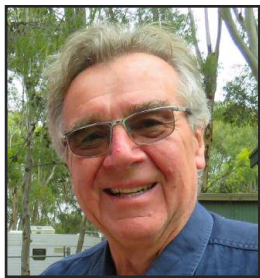
Professional 4WD Repairs & Enhancements by 4WDrivers



4WD Routine, Pre-trip & Log Book Servicing,  
Repairs, Suspension & Wheel Alignment

**Alltrac 4WD 305 South Road Mile End 5031**  
**Ph: (All Hours) 08 8234 6877 Fax: 08 8234 6833**  
**[alltrac4wd.com.au](http://alltrac4wd.com.au) E: [sales@alltrac4wd.com.au](mailto:sales@alltrac4wd.com.au)**





## from your President

Hello Members,

Having spent a further two weeks in the High Country after the National Conference, it is now the time to return to important TLCCSA issues. The AGM looms near and our Annual Report will be sent to all Members in early May, with the Notice of Meeting. Please log in

with Try-booking (<https://www.trybooking.com/CWXDQ>) for the May General Meeting and AGM.

There has been a recent review of the criteria for determination of Life Membership. A subcommittee was formed with Darryl Royans (as our Historian), VP Simon Critchley and Membership Officer Graham Adams, Committee member Andy Davis and me, to do this. Further detail is found later in the Newsletter where a summary of this review is available.

A Life Membership panel now exists with Darryl as chair. Members are reminded that they can nominate other Members for consideration of Life Membership, by referring the Member to any of these panel members or any Committee person.

It was very pleasing to see our new web page go live. Please explore (<https://www.tlccsa.asn.au>) and feedback any issues to our IT group (Monte Weeding, Craig Marchant and Peter Harper). Don't be afraid of the Members Login. You will get an Email from [website.support@tlccsa.asn.au](mailto:website.support@tlccsa.asn.au) with the instruction to reset a password. This is how we give your membership its unique password so you can get to the Members Area to do things like update your details, printout a form or get a copy of our Constitution.

I am off to join the team from Environment heading to Arkaroola to go chasing the Jumping Cholla, or *Cylindropuntia fulgida*, also known as the hanging chain cholla, which is a native to Sonora and the Southwestern United States. We have help from Bio-Security SA who have raised a cochineal specific to this species at the Arid Lands Nursery at Port Augusta. Well worth a visit if you are passing through.

Safe Travels,

V.lad

**Vlad Humeniuk**  
**TLCCSA President**

## Annual General Meeting

West Adelaide Football Club, 57 Milner Road, Richmond  
Monday May 26th 2025

All members are invited to attend the AGM that will be held immediately following the General Meeting, 7.30 start.



The **26th May 2025 General Meeting** will be held at ~ **West Adelaide Football Club**  
**57 Milner Rd, Richmond.**

Open at 6.45pm. It is important that you book your spot - use booking code. <https://www.trybooking.com/CWXDQ>



### Front Cover Photo:

TLCCSA Members at the Victorian TLCC Conference - Victorian High Country

**Banking Details:** pg 23

**Club Contacts:** pg 4

**Club Yearly Calendar:** pg 5

### Trip Reports & Features:

- Clean up Australia pg 12
- Review - Life Members pg 14
- Coopers Brewery Tour pg 17
- Goolwa Beach Run pg 18
- RFDS Tour pg 19

**Training 2025:** pg 9

**Trips / Socials:** pg 6

**Club Merchandise:** pg 20

**For Sale / Wanted:** pg 16 & 20

### Next General Meeting: AGM

26th May 2025, 7.30pm,  
**West Adelaide Football Club.**

### Trip Reports:

### Guest Speaker:

### Newsletter Articles Deadline: Monday 2nd June 2025

Please ensure submissions are lodged prior to the deadline to support the newsletter timelines. Please send articles and separate original photos to:

**[newsletter@tlccsa.asn.au](mailto:newsletter@tlccsa.asn.au)**

and remember to **include the names** of members when submitting photos.

# club contacts

2024-25

Committee		Email	A/H Phone
President	Vlad Humeniuk	pres@tlccsa.asn.au	0408 825 144
Vice President	Simon Critchley	vpres@tlccsa.asn.au	0438 322 997
Secretary	Helen Brettig	secretary@tlccsa.asn.au	0421 114 476
Minute Secretary	Pam McDonald	minsec@tlccsa.asn.au	0409 869 796
Treasurer	Tom Garamy	treasurer@tlccsa.asn.au	0411 868 835
Education	Peter Harper	education@tlccsa.asn.au	0410 526 317
Environment	Michael Polacek	environ@tlccsa.asn.au	0413 003 038
	Ian Frost		
Social	Pam Humeniuk	social@tlccsa.asn.au	0418 825 137
Trips	Pin Needham	trips@tlccsa.asn.au	0437 420 099
Advertising/Publicity	John Potts	advertise@tlccsa.asn.au	0437 327 259
Immediate Past President	Allan McIntyre	ipp@tlccsa.asn.au	0403 582 134
Committee	Andy Davis	ajdavis7@outlook.com	0417 805 405
Committee	Larry Coaker	larrco119@gmail.com	0419 230 036
<b>Non - Committee Officers</b>			
Membership	Graham Adams	memb@tlccsa.asn.au	041 7854 318
Newsletter	Brian Stone	newsletter@tlccsa.asn.au	0419 998 834
Welcoming	Vladimir Malcik	welcome@tlccsa.asn.au	0409 607 624
	Andy Robb		0408 800 700
Assistant Education	Murray McClay	edusub@tlccsa.asn.au	0419 031 046
Facebook Editor	Andrew Strain	facebook@tlccsa.asn.au	0413 804 698
	Darryl Royans		0414 307 280
Historical Vehicle/Club Registration		clubrego@tlccsa.asn.au	
	Darryl Royans		0414 307 280
	Michael Polacek		0413 003 038
Radio/GPS	Ralph Abbot	radio@tlccsa.asn.au	0424 079 223
SAAFWDC Delegate	Larry Coaker	delegates@tlccsa.asn.au	0419 230 036
Technical	Peter Young	technical@tlccsa.asn.au	0418 846 544
Merchandising Officer	Carola Sanders	merchandise@tlccsa.asn.au	0412 632 658
Webmaster(s)	Monte Weeding	webmaster@tlccsa.asn.au	0408 832 771
Property Officer	Larry Coaker		0419 230 036
Hon. Auditor	Steve Miller		0419 808 798
Conservation SA Delegate	Ricard Trevena	rhtrevena@gmail.com	0417 864 577
	Edmund Morries		

## DISCLOSURE REQUIREMENTS

As part of the disclosure requirements for our Public/Directors & Officer Liability insurance, please contact a committee member with relevant information if you are or become aware that:

- There has been or there is now pending any claim against any Director or Officer in their capacity as either Director or Officer of this club or any other organization.
- Any Director or Officer has ever been subject to disciplinary action, been fined or penalised or been subject to an enquiry in their capacity as a Director or Officer of the club or any other association.
- You have any knowledge or information of any incident, act, error or omission that may give rise to a claim of the type as would be covered by the policy,

## Welcome!

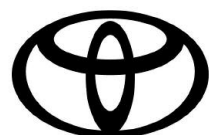
The club would like to extend a warm welcome to the following new member for the month of May 2025.

- Geoff Deans from Croydon Park
- Alan & Anne White from West Beach
- Graham Burton from Port Elliot
- Alan Harrland from Finniss
- Isaac Rudd from Hahndorf

May your membership with the club be a long and memorable one.

# Cornes Toyota

Driving excellence in everything we do



TOYOTA

If you are in the market for a new or used car please contact:

**Daniel Munday**

General Manager

Contact: M 0421 139 545  
D 8179 0034



46 Belair Road  
HAWTHORN SA 5062  
phone (08) 82721488

# club yearly calendar - 2025

## May 2025

**Sun 4<sup>th</sup>** ~ Historic Car Run (cancelled)  
**Sun 4<sup>th</sup>** ~ Caravan Safety Awareness  
**Thur 8<sup>th</sup> - Fri 16<sup>th</sup>** ~ Arkaroola Cactus Cull  
**Fri 16<sup>th</sup> - Sun 18<sup>th</sup>** ~ Advisor Course - Morgan  
**Sat 17<sup>th</sup> - Sun 18<sup>th</sup>** ~ Ascent / Descent - Morgan  
**Sun 25<sup>th</sup>** ~ Magical Mystery Tour  
**Mon 26<sup>th</sup>** ~ General Meeting & AGM, WAFC

## June 2025

**Fri 6<sup>th</sup> - Mon 9<sup>th</sup>** ~ Bendleby Ranges  
**Thurs 12<sup>th</sup> - Tue 8<sup>th</sup> July** ~ Canning Stock Route  
**Fri 20<sup>th</sup>** ~ David Roche Gallery Tour  
**Mon 23<sup>rd</sup>** ~ General Meeting, WAFC  
**Sat 28<sup>th</sup> - Sun 29<sup>th</sup>** ~ Peake Sand Driving

## July 2025

**Fri 11<sup>th</sup> - Sun 13<sup>th</sup>** ~ Christmas in July - Wilmington  
**Mon 21<sup>st</sup> - Sun 27<sup>th</sup>** ~ Gum Creek Cactus Culling  
**Sun 27<sup>th</sup> - Sat 2<sup>nd</sup> Aug** ~ Moolooloo Cactus Culling  
**Mon 28<sup>th</sup>** ~ General Meeting, WAFC

## August 2025

**Sun 10<sup>th</sup> - Sun 24<sup>th</sup>** ~ 4WD Tinnie Trip - Warburton River  
**Mon 25<sup>th</sup>** ~ General Meeting, WAFC  
**Mon 25<sup>th</sup> - Sun 31<sup>st</sup>** ~ Kudriemitchie  
**Sat 30<sup>th</sup> - Sun 31<sup>st</sup>** ~ 4WD Theory

## September 2025

**Sat 6<sup>th</sup> - Sun 7<sup>th</sup>** ~ Peake Sand Driving  
**Wed 10<sup>th</sup>** ~ Adelaide Planetarium Visit  
**Mon 22<sup>nd</sup>** ~ General Meeting, WAFC  
**Sun 28<sup>th</sup>** ~ GPS (Theory & Practical)

## October 2025

**Fri 3<sup>rd</sup> - Mon 6<sup>th</sup>** ~ Ralph Abbott Argadells Trip  
**Sat 18<sup>th</sup> - Sun 19<sup>th</sup>** ~ Ascent / Descent - Morgan  
**Sun 19<sup>th</sup> - Sat 1<sup>st</sup> Nov** ~ Gawler Ranges & Eyre Peninsula  
**Sun 26<sup>th</sup>** ~ Trip Planning  
**Mon 27<sup>th</sup>** ~ General Meeting, WAFC

## November 2025

**Sun 9<sup>th</sup>** ~ Wheel Change and Pre-Departure  
**Mon 24<sup>th</sup>** ~ General Meeting, WAFC  
**Fri 28<sup>th</sup> - Sun 30<sup>th</sup>** ~ Christmas Party - Port Elliot

**More Trips ? - "You can help"** Know of a place you'd like to visit & would like to share it with us? Think about it and let us know. If you're not able to be the trip leader for your suggestion, then the Committee will seek some one who may be willing to do so. So have a think about it and let us know about a weekend or long weekend trip.

**Talk to our Trips Officer - Pin Needham ([trips@tlccsa.asn.au](mailto:trips@tlccsa.asn.au))**



**\$200 Reward Card\***

Receive \$200 for referring friends who purchase a vehicle from us.

**Cornes Toyota**  
46 Belair Road  
Hawthorn, SA 5062  
T 08 8272 1488  
[cornestoyota.com.au](http://cornestoyota.com.au)

**OH WHAT A FEELING**



Cornes Toyota provide benefits for both members and the Club. The Spotters Card is for vehicle purchases by members or referred friends with the Club then receiving a payment direct from Cornes.

**THE POWER OF**

**REDARC**

**Purchase a REDARC product on-line and get 10% discount.**

**Contact Advertising & Publicity officer for details.**



**Special Offer for TLCCSA Members**



## trips

### Pin Needham

Trips Officer

Telephone: 0437 420 099

Email: [trips@tlccsa.asn.au](mailto:trips@tlccsa.asn.au)



## social

### Pam Humeniuk

Social Officer

Telephone: 0418 825 137

Email: [social@tlccsa.asn.au](mailto:social@tlccsa.asn.au)

## trip ratings

**SCENIC:** Bitumen & dirt roads, limited 4wding, lookouts, flora and fauna of the local area, other points of interest.

**EASY:** Mainly off bitumen on formed tracks, some 4wding, no steep inclines or declines.

**MODERATE:** Bush terrain, beach terrain, some inclines or side slopes, soft sand or mud areas, easy creek crossings.

**HARD:** Rough terrain, steep inclines, steep side slopes, rough creek crossings, possible towing and/or snatching.

**DIFFICULT:** Very rough terrain, very steep inclines, steep side slopes, slippery conditions, difficult creek crossings, some towing, snatching and or winching.



## SAVE THE DATE TLCCSA

### Christmas Party Port Elliot

Fri 28th - Sun 30th  
November



# events calendar

Register now via  
[trybooking.com](http://trybooking.com)

### 1. Arkaroola Cactus Cull

**Date:** 8 May - 16 May 2025

**Leaders:** Michael Polacek

**Convoy:** 25 people. **(14 booked)**

**Rating:** Scenic and moderate. Tracks accessing cactus areas and the trip on the rest day will be moderate.

Arkaroola Station is 140 km east of Copley. This working bee is for 1 week of culling, identifying and recording jumping cholla cactus eradication efforts.

There are some quarters with toilets and showers. Caravan, camper vans and tents can be easily accommodated as there is plenty of room.

The station has some fantastic drives and a history to be explored.

<https://www.trybooking.com/CXPAV>

— # —

### 2. Blinman Golf Course Restoration Project (Postponed)

**Dates:** Sun 11- Sun 18 May, 2025

**Leader:** John Potts

**Convoy:** 10 vehicles, OK for up to 10 caravans or trailers

**Comment:** Trip to assist the Blinman Progress Association with the reinstatement of tee boxes at the local golf course. Meet at the Gum Creek Shearer's Quarters. Contact Trip Leader if needing accommodation in the Shearer's Quarters

<https://www.trybooking.com/CZFWS>

— # —

### 3. Magical Mystery Tour

**Date:** Sun 25th May 2025 9:30am

**Leaders:** Christine Adams / Andrew McDonald

**Detail:** Can you puzzle out the route, and find the clues along the way? The day will start at Crafrers Park n Ride South, each car will head off on a leisurely tour along country roads, in search of answers to the questions on your tour sheet. You will travel a

maximum of 100 kms, taking about 2 ½ hours, in a loop which finishes at Byethorne Park, Nairne.

There we will have a sausage sizzle lunch provided by the club, and then the fun will begin as we hear of your travels, and score your answer sheet. Come along and have a fun day, friends welcome.

**Info needed** Name, contact details  
Number of people in car (minimum of 2 required, pair up with other members, or bring a friend)

**(29 booked)**

<https://www.trybooking.com/CZPOS>

— # —

### 4. Bendleby Ranges

**Leaders:** James & Lin Edwards

**Date:** Fri 6 - Mon 9 June 2025

**Convoy:** 20 vehicles **(23 booked)**

**Rating:** There are 200 km of tracks on the property with varying degrees of difficulty from easy to difficult in rough hilly country with some steep ascents & descents and great views of the surrounding area.

**Detail:** Camp will be at one of the remote bush sites, suitable for vans, trailers & tents. Camp sites have toilets and please bring your own firewood. You will need to be self sufficient for food & water. Fees are \$90 for the weekend plus \$27.50/night per person, (\$82.50 pp for 3 nights). Please bring evidence of Basic 4WD experience especially ascent & descent training at either Morgan or equivalent. Rated recovery points & equipment are required.

<https://www.trybooking.com/CXKKP>

— # —

### 5. Canning Stock Route, North to South, 2025

**Date:** Thur 12 June - Tue 8 July 2025

**Location:** Canning Stock Route, Billiluna WA 6770

**Leaders:** Steve Miller / Phil Custance



**Convoy:** 6 vehicles **(Booked Out)**

**Comment:** The Canning Stock Route is a track that runs from Halls Creek in the Kimberley region of Western Australia to Wiluna in the mid-west region. With a total distance of around 1,850 km, it is claimed to be the longest historic stock route in the world. We will start at Billiluna (WA), heading south on CSR finishing at Wiluna (WA).

**Terrain:** rocky dirt roads, corrugations, sandhills. Fuel for 1100 km plus contingency, self sufficient food & water for 21 days. No Towing, tents only. Permits needed: 1. CSR \$295, wells 5 to 51, 2. Parku IPA permits, Lake Gregory, Lake Stretch, Sturt Creek, camping at \$30/night. 3. Gunbarrel-Shire of Ngaanyatjaraku Website \$nil - 3 Day transit to get to NT Border, (4) Permit to travel through Aboriginal Land \$ nil - WA Gov, (5) all above to be confirmed.

<https://www.trybooking.com/CYPVU>

\*\*\* NEW \*\*\*

## 6. David Roche Gallery Tour

**Leaders:** – Peter and Sue Bradley

**Date:** Thurs 20th June 2025 10.00 am

**Cost:** \$17 per person for Guided house tour and tour of the current exhibition.

**Convoy:** 20 **(1 booked)**

### Social Event

David Roche Gallery, 241 Melbourne Street, North Adelaide 5006

This amazing Gallery was the legacy to SA from David Roche. The house evolved over the decades and the rooms reflect how David lived at the time. The rooms reflect his eclectic style and he had a vast budget to collect fabulous items from all over the world. The Gallery also hosts various exhibitions from all over the world.

Parking available on site.

Strictly limited to 20 people. Lunch afterwards at a nearby hotel at your own expense.

<https://www.trybooking.com/DBFMF>

\*\*\* NEW \*\*\*

## 7. Xmas in July - Wilmington

**Date:** Fri 11 - Sun 13 July 2025

**Leader:** Pam Humeniuk

**Rating:** Scenic / Easy

**Convoy:** Unlimited **(6 booked)**

**Location:** Stony Creek Bush Camp &

Caravan Park Wilmington SA

**Cost:** \$5 per head.

**Comment:** Powered and non powered sites available. Ensuite rooms and bunkhouse rooms (could take up to 4 people, bunks etc.) available.

Please ring & book your own site. Say that you are part of TLCCSA booking. Ph: 0488 156 850 – 1st in best dressed

Stony Creek Bush Camp is a private bush camp located 2.5kms outside the town of Wilmington in the Southern Flinders Ranges, about 3.5 hours drive north from Adelaide.

Friday - pizza night \$15 per head. (pay on the night)

Saturday -The Big Cook Up. The Social committee organise the meat for our "Christmas dinner" and the trimmings, gravy, etc. plus sweets. You bring the veg.

Camp Cooking Competition to make your vegetables into a parcel to be cooked on the open fire. Think a swan, or a Toyota car! It's up to you

Mulled wine supplied, bring your own port if that's your fancy.

BYO every thing else. Chairs, small tables, cutlery, crockery etc.

There will be a fun Kris Kringle . Uni-sex gift, bring it along wrapped up.

Exploring opportunities on Saturday & Sunday

<https://www.trybooking.com/DBCVC>

— # —

## 8. Gum Creek Cactus Cull

**Date:** 21 – 27 July 2025

**Leaders:** Michael Polacek

**Convoy:** 24 people. **(15 booked)**

**Rating:** Scenic and moderate. Moderate tracks accessing cactus areas and rest day trip is usually moderate. This working bee is for one week of culling, identifying and recording wheel cactus eradication efforts.

Come and join us on Gum Creek Station in the Flinders Ranges. We have been doing this for 16 years. Join our expert team and have some fun. Some accommodation available in the shearers quarters or bring your van, camper trailer, tent, etc.

Persons attending Gum Creek Station are most welcome to then continue down the track to Moolooloo after completion on 27 July.

<https://www.trybooking.com/CXKIP>

## 9. Moolooloo Cactus Cull

**Date:** 27 July - 2 August 2025

**Leaders:** Michael Polacek

**Convoy:** 22 people. **(22 booked)**

**Rating:** Scenic and moderate. Tracks accessing cactus areas and the trip on the rest day will be moderate.

Moolooloo Station is 25 km north of Blinman. This working bee is for 1 week of culling, identifying and recording wheel cactus eradication efforts.

There are fabulous shearers quarters with toilets and showers. Vans and camper vans can be accommodated as there is plenty of room.

The station has some fantastic drives and a history to be explored.

<https://www.trybooking.com/CXKKC>

— # —

## 10. Tinnie Trip to the Warburton 2025

**Date:** Sun 10 - Sun 24th August 2025

**Location:** Kalamurina Station SA 5734

**Leaders:** Michael Polacek / Peter Young

**Convoy:** min of 3 tinnies plus Support crew. **(4 booked)**

**Comment:** Warburton Creek forms downstream from the confluence of the Diamantina and Georgina rivers in Goyder Lagoon, and flows in a south-westerly direction for about 150 km before discharging into Lake Eyre. Starting at Stoney Crossing on Kalamurina Station, we launch the Tinnies & travel 60km to Wetlands camp to refuel before continuing to the Warburton Groove (140km) then retrace our track (about 400km round trip). Each participant must be completely self resourced, Tinnie (11-12 foot). 15 hp motor ability to take 220 litres of fuel, camping equipment, radios, food & water for at least 7 days on water. Zodiac to be towed on water with fuel for part of the journey. Starting with a 2 day drive from Adelaide. Support vehicles, towing fuel trailers will be needed as well to act as backup for the Tinnie troupe.

<https://www.trybooking.com/CYPIJ>

— # —

## 11. Kudriemitchie Outstation Trip & Working Bee

(subject to flood conditions)

**Date:** August 25 to 31, 2025

**Leader:** Steve Miller

**Convoy:** Unlimited, (4 booked)

**Terrain:** Gravel roads with rocks shale & bulldust. Long distances, 1150 km. Suitable for caravan, Off Road Van, Camper Trailer, Tents

**Comment:** Situated about 1140 km north from Adelaide, and 85 km northwest of Innamincka on the Coongie Lakes Track (Montepirie Track) is Kudriemitchie Outstation, once a pastoral outstation used to accommodate the mustering parties away from the main homestead at Innamincka. TLCCSA members have been involved since 1995, renovating & restoring the Outstation mostly under the influence and enthusiasm of the late Steve Golley, DEW and Innamincka Station (Santos). This site is now heritage listed.

In August 2025 Innamincka will be the NPWS Park of the Month. NPWS will be shining a spotlight on Innamincka and no doubt travellers will visit Kudriemitchie. This trip is part tidying up and presentation and part relaxation (trying to catch elusive Yellow Belly fish). There is likely to be an earlier trip at short notice to assist and plan the tasks.

**Equipment:** Normal recovery gear UHF Radio

<https://www.trybooking.com/CZJXT>

— # —

## 12. Fraser Island (K'gari) Scenic 2025 EOI

**Date:** Saturday 30 August 2025 - Sunday 7 September 2025

**Leaders:** Craig Marchant

**Convoy:** 22 people. (6 booked)

**Rating:** Scenic and moderate

**Comment:** Your opportunity to visit the world's largest sand island. The main way around the island is via the beach, which is generally easy to drive on, with a 80kph speed limit. The inland tracks can be rough due to the volume of traffic. More remote

tracks have the potential to be softer and rutted out, again simply due to traffic and not being maintained.

Start at Rainbow Beach at 5:00pm on August 30, staying overnight at Rainbow Beach Caravan Park, 308 Carlo Road, Rainbow Beach Qld 4581 before taking the ferry at Inskip Point to K'Gari on the 31st. Bush camping with facilities except for 1 night. Be aware of the dingos. Contact trip leader for detailed itinerary and more information. No caravans or trailers.

Essential gear- Long handle shovel, basic recovery gear, compressor, tyre deflator. Desirable - traction boards. Permits are required for vehicles driving on K'gari as well as separate camping permits at designated sites and dates. There is a ferry charge of \$140 return. Contact the trip leader for more details.

Also remember that Rainbow Beach is approximately 2200 Km from Adelaide, allow 2-3 days each way for this journey.

<https://www.trybooking.com/CXKLA>

\*\*\* NEW \*\*\*

## 13. Adelaide Planetarium Visit

**Date:** Wed, 10th Sept 2025 10:15am

**Leader:** Denise Malcik

**Convoy:** 40

**Cost:** \$20 per person

Adelaide Planetarium, University Boulevard, Mawson Lakes

The Adelaide Planetarium will take you on an immersive journey through space, with stars and constellations coming alive during the stunning night sky presentations and full dome movies. 10.15 am start. \$20 per person Option of lunch afterwards at own expense.

<https://www.trybooking.com/DBFMV>

— # —

## 14. Ralph Abbot Argadells 2025

**Dates:** Fri 3 - Mon 6 Oct 2025

**Leader:** James & Linley Edwards

**Convoy:** Unlimited (4 booked)

**Rating:** Moderate to Hard

**Comment:** Rocky ascents and descents with some steep sections. Beautiful views across the surrounding landscape to Port Augusta, Lake Torrens.

Argadells Station 2641 Ardenvale Rd, 28km North of Quorn. A working sheep property of 32 square Km's approx 360km North of Adelaide.

Various tracks ranging from Moderate to Hard. Must have low ratio and good clearance with 4x4 experience in ascent/descent.

**Trip Details:** Travel to Argadells on Friday 4 Oct. BYO everything. Camping will be at one of the property's bush sites (Wint's) so will necessitate being completely self sufficient. Suitable for semi offroad/offroad caravans, camper trailers & tents.

For those who wish to bring an onroad van, there is a Caravan park available at \$35/night (2 people) approx 5km from the bush camp.

Property access is \$50 per vehicle plus camping fee of \$15/adult/night.

We will order some firewood from the property (\$100 to be shared between the attendees once we have final numbers) but please bring a bag along to supplement this.

For more information see their website.

<https://www.argadells.com.au/>

<https://www.trybooking.com/CXKLJ>

— # —

## 15. Gawler Ranges and Eyre Peninsula 2023

**Date:** 19 Oct - 1 Nov 2025

**Leader:** Denise & Vladimir Malcik

**Convoy:** 6 vehicles (14 booked)

**Rating:** Moderate

Gawler Ranges NP with gravel tracks and sand driving on beaches on Eyre Peninsula.

Also time for walking, fishing and just relaxing.

Camping starts at Mambray Creek,

**cont'd page 11.**



# training calendar 2025

updated Nov 2024



**Peter Harper**

Education Officer

Telephone : 0410 526 317

email : [education@tlccsa.asn.au](mailto:education@tlccsa.asn.au)



**Murray McClay**

Assistant Education Officer

Telephone : 0419 031 046

email : [edusub@tlccsa.asn.au](mailto:edusub@tlccsa.asn.au)

FROM	TO	ACTIVITY	WHERE	FEES	DEPOSIT	INFORMATION
Wed 12th Feb 2025		New Members Night	SCC	Nil		<a href="https://www.trybooking.com/CXKJL">https://www.trybooking.com/CXKJL</a>
Sun 23rd Feb 2025		Tyre Repair	Ironbank	\$10 per person	\$10 per person	Fee covers the cost of materials and refreshments <a href="https://www.trybooking.com/CXKJM">https://www.trybooking.com/CXKJM</a>
Sat 1st Mar 2025	Sun 2nd Mar 2025	Theory	TBA	\$20 per person	\$20 per person	<a href="https://www.trybooking.com/CXKJN">https://www.trybooking.com/CXKJN</a>
Sat 8th Mar 2025	Sun 9th Mar 2025	Sand + Winching	Peake	\$40 per vehicle	\$40 per vehicle	Property access cost \$40 per car. No cost for basic training for enrolled members <a href="https://www.trybooking.com/CXKJO">https://www.trybooking.com/CXKJO</a>
Sun 4th May 2025		Caravan Safety Awareness	Barossa Valley	\$120 per couple		<a href="https://www.trybooking.com/CXPUF">https://www.trybooking.com/CXPUF</a>
Sat 17th May 2025	Sun 18th May 2025	Ascent - Descent	Morgan	NIL	\$30 per vehicle	No cost for basic training for enrolled members. Deposit refunded on Saturday night <a href="https://www.trybooking.com/CXKJP">https://www.trybooking.com/CXKJP</a>
Sat 28th Jun 2025	Sun 29th Jun 2025	Sand + Winching	Peake	\$40 per vehicle	\$40 per vehicle	Property access cost \$40 per car. No cost for basic training for enrolled members. <a href="https://www.trybooking.com/CXKJO">https://www.trybooking.com/CXKJO</a>
Sat 30th Aug 2025	Sun 31st Aug 2025	Theory	SCC	\$20 per person	\$20 per person	<a href="https://www.trybooking.com/CXKJR">https://www.trybooking.com/CXKJR</a>
Sat 6th Sep 2025	Sun 7th Sep 2025	Sand & Winching	Peake	\$40 per vehicle	\$40 per vehicle	Property access cost \$40 per car. No cost for basic training for enrolled members. <a href="https://www.trybooking.com/CXKJS">https://www.trybooking.com/CXKJS</a>
Sun 28th Sep 2025		GPS (Theory & Practical)	SCC	\$20 per person	\$20 per person	Fee covers cost of refreshments. <a href="https://www.trybooking.com/CXKJT">https://www.trybooking.com/CXKJT</a>
Sat 18th Oct 2025	Sun 19th Oct 2025	Ascent Descent	Morgan	NIL	\$30 per vehicle	No cost for basic training for enrolled members. Deposit refunded on Saturday night <a href="https://www.trybooking.com/CXKJU">https://www.trybooking.com/CXKJU</a>
Sun 26th Oct 2025		Trip Planning	TBA	\$20 per person	\$20 per person	Fee covers cost of refreshments. <a href="https://www.trybooking.com/CXKJW">https://www.trybooking.com/CXKJW</a>
Sun 9th Nov 2025		Basic Wheel Change and Pre-departure	Ironbank	\$10 per person	\$10 per person	Anyone enrolled in the training program who has not completed these two elements. <a href="https://www.trybooking.com/CXKJX">https://www.trybooking.com/CXKJX</a>

## TLCCSA training team

### TRAINERS:

STEVE MILLER

### ASSESSORS:

ALLAN McINTYRE  
DAVID ELLIS

GARY CHRISTIAN  
GEOFF GREEN  
GEOFF THOMPSON

JASON SABEENEY  
MURRAY McCLAY  
PETER HARPER

SHANE SAXBY  
TONY VAN WYK  
EDMUND MORRIES

**TRAINERS:** Conduct driver training

**ASSESSORS:** Conduct driver training & assessment

**NOTE:** All training sessions are subject to the availability of Trainers, Assessors and the number of member nominations. Small cost for advanced training and non enrolled members.

# Cornes Toyota



## Special service offer for Landcruiser Club Members

### Service includes:

- Engine oil & filter
- Lube, driveshafts, universal joints and steering stops
- Check electric systems and lights
- Battery check and clean terminals
- Visual inspection of air conditioning and report
- Brake inspection

### Plus free car wash and interior vacuum!

Please note this is not a book maintenance service

## \$239

All 4WD vehicles

Loan car available by arrangement

### Cornes Toyota

46 Belair Road  
Hawthorn SA 5062  
T: (08) 8272 1488  
cornestoyota.com.au

Service opening hours:  
Monday to Friday  
7.30am - 5.00pm

## OH WHAT A FEELING

## SERVICE PROVIDER OF THE MONTH

### GTN Services - Leonora WA

I was filling my vehicle at Laverton fuel depot feeling pretty proud about crossing the Gary Junction Road and touring around the Pilbara without incident. My wife and I were about head up the Great Central Road feeling confident our trip would be troubleless. I paid for the fuel walked back to the vehicle, hopped up to start 'Sherman' and guess what – nothing. Bugger! I was stuck on the pad blocking the access for other vehicles, mild panic set in so I hightailed it back to the counter, explained the problem, and a kind worker came out to try and help but to no avail. Ignobly, 'Sherman' avec camper was towed off the pad to the adjacent parking area. I had been given the number of a service centre in Leonora whom I rang and tried to troubleshoot the problem over the phone. Once again no go. A call to RAA and a mobile service visit some 3 to 4 hours later from Leonora by GTN Services, who also provided the phone assist, and with some jiggery-pokery, Sherman's alarm system, the culprit, was disconnected and we were back on the road. However, the GCR had to wait to the following day. All in all a successful journey up the GCR and safe return home. Electric bug reconnected the alarm but couldn't find problem.

So if you are in the Leonora area, WA and you have car problems don't hesitate to ring:

GTN SERVICES  
77-79 Hall street,  
PO Box 140  
LEONORA WA 6438  
admin@gtnservices.com.au  
Tel: 08 9037 6880  
Mobile: 0458 700 288

**John Potts**



then Gawler Ranges NP, Waganny Campground (2 nights), Coffin Bay Yangie Campground (4 nights) and Lincoln NPs. Summer Beach Campground.(4 nights)

Essential gear- Long handle shovel, basic recovery gear, compressor, tyre deflater, UHF radio. Desirable - traction boards and second spare tyre

Permits required for Mambray, Gawler Ranges, Coffin Bay & Lincoln NP. Participants to make their own campsite bookings. A 2 month pass available on line (\$54 per couple)  
<https://www.trybooking.com/DACSL>

## GENERAL

### LET'S DO LUNCH CLUB

An ad hoc group who occasionally lunch (or it could be dinner) together to keep in touch and make new friends.

REGISTER VIA TRY BOOKING to indicate your interest. When an event is organised the organiser contacts all those registered and if you are free and the restaurant/venue appeals, you book in. No pre-paying – no permanent commitment.

Restaurant organisation is to be shared amongst those registered, with an emphasis on trying new and varied menus.

<https://www.trybooking.com/CHTKR>

### SHOW & TELL

Tell us about your favourite gadget or item that is very useful in the home or whilst on safari.

Each month, a member can demonstrate the item in order to share innovation and knowledge.

Send an email to Pam Humeniuk [social@tlccsa.asn.au](mailto:social@tlccsa.asn.au) for further details. She would love to hear from you.

### Blaze Aid + Habitat for Humanity ~ Volunteer List

Requests from these organisations can occur at short notice so it's great to have a updated members list that we can call on.

Using TryBookings will give us an up-to-date list to of members to call on at short notice.

Putting your name on this list does not mean you are committed every time to go, it depends on your availability at the time.

Volunteers are often required to assist with towing trailers & materials, clearing rubbish and debris, etc. Fuel costs are generally re-imbursed.

If you would like to help as requests arise, please register via the link below.

<https://www.trybooking.com/BOEYF>

*That's all for now folks!*

### MAGICAL MYSTERY TOUR Sunday 25th May 2025

A family fun day organised by your Social Club

A fun tour along country backroads, in search of answers to the questions on your tour sheet. Put your detective hat on and be alert!

Meet at Crafrers Park n Ride South, at 9.30 am, for your instruction sheet. You will travel a maximum of 100 kms, taking about 3 hours, in a loop which finishes at Bythorne Park, Nairne. What surprises are there along the way? A sausage sizzle lunch provided by the club, games, prizes. Come along and have a fun day. Even more fun if you have extras in the car, so friends welcome. You must register with Trybooking <https://www.trybooking.com/CZPOS>



## Christmas in July 2025

A fun weekend with gourmet pizza on Friday night cooked by our camp hosts. Christmas dinner is cooked on Saturday night in camp ovens with all meats supplied by the social committee. Bring your own vegetables and compete in the best veggie wrap competition. Enjoy delicious sweets and have a lot of laughs with a glass or two of mulled wine.

Stony Creek Bush Camp & Caravan Park Wilmington SA  
Fri 11 - Sun 13 July 2025

<https://www.trybooking.com/DBCVC>



# Clean Up Australia - Cantara Coorong National Park

**Date:** 14th-17th March, 2025.

**Leader:** Michael Polacek, assisted by Ray Gedritis and Ian Frost.

**Attendees:** Solveiga Asaris, Simon Critchley, Vlad & Pam Humeniuk, Andrew & Pam McDonald, Pin & Kim Needham, Malen Rumbelow & Jan, Geoff & Sue Thompson, Peter Young and Rob Zadow

On a hot Friday afternoon 17 intrepid souls gathered at Cantara Homestead in the Coorong National Park. Why intrepid? – We'd seen the forecast and still arrived for a day's hot work, despite having been informed there was no water available at the homestead. This could explain why numbers were down from last year. Ray, Solveiga, Kim and Pin set up in the house and the rest of the group, in a variety of caravans, camp trailers, swags and rooftop tents.



Happy hour(s) were well underway under the shade of Cantara's generous veranda by the time the last person arrived. Simon had finally found the property, having sought directions from Ian - mirth at Simon's expense was the order of the evening. Trip leader Michael welcomed everyone and gave a brief rundown on the weekends' activity. It was then time to prepare dinner for everyone, with the exception of Ian. Having discovered a swarm of bees had taken a great interest in his defrosting food, Pam and Vlad invited Ian to share their curry and await the bees' sunset departure. Some of the group gathered again after dinner for a competitive round of 5 Crowns, which saw our trusty leader taking bragging rights.



Saturday began with the usual preparation of vehicles, food and water for the day, followed by a 9am briefing, which included a demonstration of Ray's flag system for marking the areas we covered on the beach. After last year's event, where the cars working from 42 Mile Crossing managed to do nothing other than get bogged, the decision had been made that our crew would work as a single group north from Tea Tree Crossing, much to Ray's relief. There was a short drive

along the bitumen and our convoy of nine vehicles then turned onto Loop Road and headed to the large open plain of Tea Tree to air down.

We were expecting very soft sand and track maintenance to be required to get over the large dune between the campground and the track to the beach and we were not disappointed. Michael, towing one of the two trailers required for collecting the rubbish, went first almost making the top of the dune. Recovery boards were carried up the dune and Michael was soon over the top. The next six vehicles gained the top of the dune, with the use of plenty of momentum.



It was more challenging for the 4-cylinder manual, losing momentum only a short way from the beginning. Unfortunately, the vehicle slid sideways whilst attempting to reverse back, landing in a precarious position. Recovery options were discussed and Michael appointed Geoff to coordinate the process.





Geoff and Sue's winch was deployed to stabilise the vehicle and Vlad was then able to assist with a tow safely back to the base of the dune. After further reducing tyre pressures, the remaining vehicles made their way up and onto the beach, where we had a rest stop to recharge and rehydrate in whatever shelter from the heat could be found. There was some more drama when one of the participants required the ministrations of Dr Vlad. After some hydration she took a passive role for the remainder of the day in the air-conditioned comfort of the vehicle.

Some rubbish had already been collected at the Tea Tree campground and along the entrance track to the beach, but now at nearly 12 noon, it was time to get on with the main business of the day. We moved north along the beach, 200 metres apart, to begin our leap frogging and collection of litter, walking along the beach towards the car behind, collecting their flag and then returning to our vehicle along the dunes.

A couple of runs were done and lunch was then called. In the break I enjoyed cooling my feet off in the refreshing ocean water, but didn't dare venture far as the waves were ferocious. We were grateful for the cooling ocean breeze, as the temperature approached 41 degrees inland at nearby Salt Creek by 2:30pm. We continued our work until mid-afternoon, when energy levels waned and last run was called. The excitement wasn't quite over for the day with both of the towing vehicles bogging in the soft sand. They were soon extracted and the convoy made its way back to Tea Tree track.



Less rubbish was collected than previous years - less than a full trailer along 11kms of coastline. This included bottles, cans, plastic bags, nappies, bait baskets, so many blue bottle lids, rope and a Kings awning.



We encountered several groups of campers enjoying the beautiful remoteness of the beach and the fishing on offer. One surprising find was the remains of a juvenile Humpback whale. Great to have Pin with us to identify it for us. Saturday evening, we shared a delightful BBQ dinner, provided by the club and cooked by Ray, Geoff and Andrew, with many helpers chopping onions, preparing salads and washing up. Big thanks to Beth Polacek for shopping for the meal. A selection of delicious desserts followed. Michael thanked the crew and there was discussion about a unique opportunity to undertake a drive to Martin Washpool Conservation Park the following day. Michael regaled us with the bloody history of how this area got its name. The evening concluded with lively chatter and cards for some

(Solveiga taking the win over Michael this time).

We experienced 4 seasons over the weekend with rain and a cool change arriving overnight Saturday. Several of the group headed home early on Sunday, while four cars spent the day exploring Martin Washpool.

**Pam McDonald**





## Day Trip Around Martin Washpool



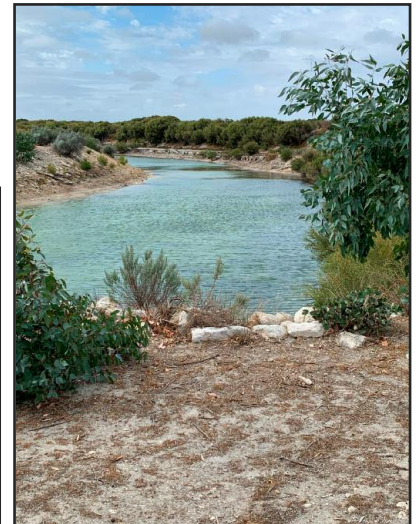
On Sunday, 16 March, we were granted exclusive access to restricted tracks around Martin's Washpool, a conservation area near Salt Creek for a short day trip.

The park was named after Malachi Martin, a convicted murderer, who washed the blood from himself after committing murders in the Salt Creek area around the 1860s.

Vlad and Pam Humeniuk, armed with a mud map, lead Malen Rumbelow, Janet, Simon Critchley and Geoff and Sue Thompson on a 2.5-hour tour of the area. On leaving Salt Creek we travelled inside the park fence line, on a mixture of soft sandy, firm sand and occasionally sandstone rocky tracks dodging wombat burrows along the way. This side of the lagoon was medium to dense native bushes and dotted throughout with grass trees (yakkas), Xanthorrhoea.

At the end of the fence line, we passed through a series of locked gates which we had been given the keys for our special trip. The tracks remained similar though had mild ascents and descents, became windier as we proceeded, and we occasionally sighted the lagoon through the bushland. We stopped several times to investigate several man-made structures, designed to capture, direct and control waters from the area. The vegetation gradually changed to different species of tall brush bushes, in some places was so dense we wondered how early explorers managed to navigate through the area. In one spot, we were able to find a path through to the lagoon where we wondered at the large populations of ducks and swans that gathered at the waters. After a few more turns we sighted civilization and realizing our morning trip had ended, locked the final gate before returning to Salt Creek where we started.

**Simon Critchley**



## Review of Life Membership Criteria

The Club's Committee recently formed a small sub-group to review the existing Life Membership criteria and make recommendations for change if appropriate. Our Life Membership assessment has been built around a points system with the member's contribution in 3 main areas, being Committee Roles, Trips and Driver Training, noted.

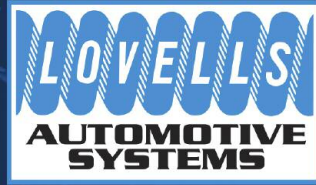
The review highlighted that unless significant years were spent on Committee a member would never qualify. It also highlighted that significant contribution could have been made outside of these 3 existing criteria.

The Review Committee recommended changes be made, which have now been adopted. Those changes will bring into consideration for Life Membership, other members who have made a significant contributions to the Club.

**Darryl Royans**







SUSPENSION UPGRADES | GVM UPGRADES | TOWING UPGRADES | PERFORMANCE UPGRADES | CUSTOM BUILDS | ACCESSORIES

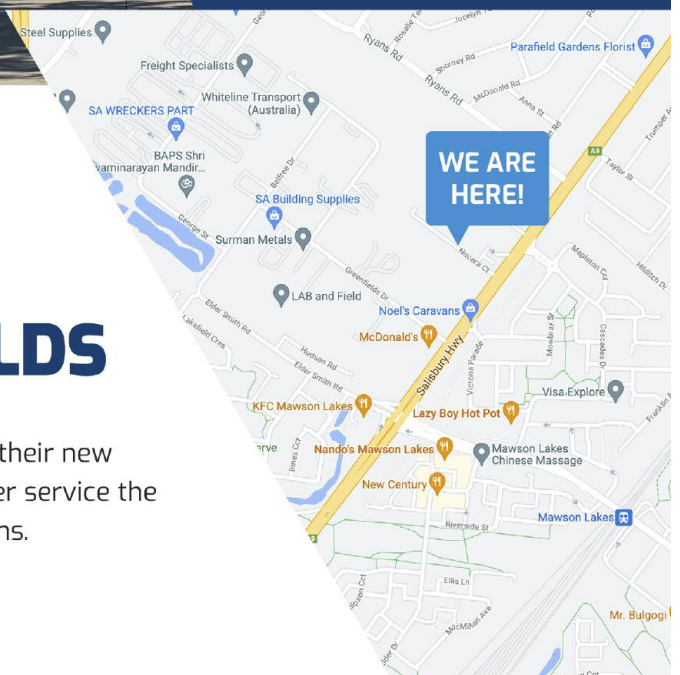


# NOW OPEN!

## LOVELLS GREEN FIELDS

Lovells Adelaide is proud to announce the opening of their new store at Green Fields, adjacent Mawson Lakes, to better service the needs in the north of Adelaide and the northern regions.

**Want to know more? Call our team to discuss the full range of products on offer!**



**LOVELLS GREEN FIELDS**

**2 NUCERA COURT,  
GREEN FIELDS SA 5107**

**1300 407 785**

**SALES@LOVELLSADELAIDE.COM.AU**

**WWW.LOVELLSADELAIDE.COM.AU**







**YOUR 4WD SETUP SPECIALISTS**

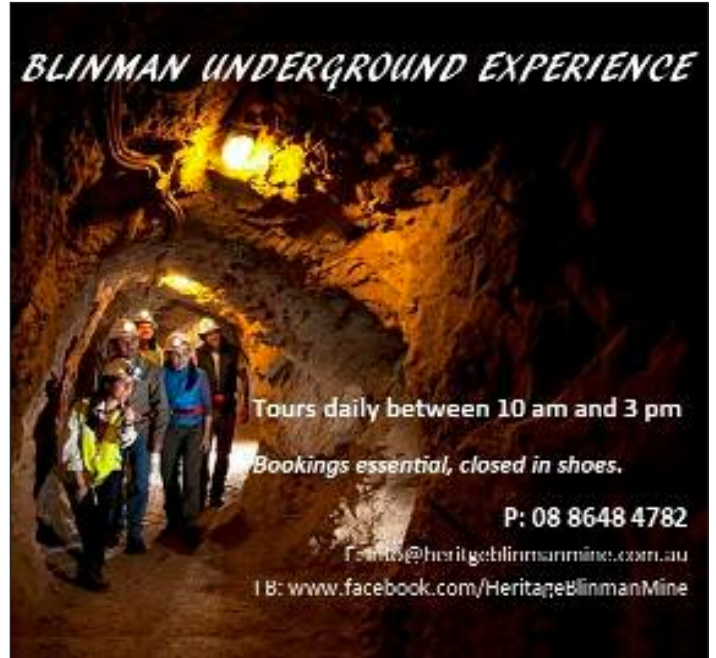
Leading Brand 4WD Accessories • Standard or Heavy Duty Towbars • Rear Steps • Parking Sensors • Reversing Cameras • Electric Brakes • Snorkels • Bull Bars • Canopies • Custom Fabrication • and much more!

175 Richmond Road, Richmond SA 5033  
[www.allintowbars.com.au](http://www.allintowbars.com.au)  
**(08) 8352 5155**

**ALLIN**  
TOWBARS

ARRB THE WORK OF REDARC ECU SMARTSEAL LUKA

**BLINMAN UNDERGROUND EXPERIENCE**



Tours daily between 10 am and 3 pm  
 Bookings essential, closed in shoes.

P: 08 8648 4782  
 Email: [Tourinfo@heritageblinmanmine.com.au](mailto:Tourinfo@heritageblinmanmine.com.au)  
 FB: [www.facebook.com/HeritageBlinmanMine](http://www.facebook.com/HeritageBlinmanMine)

**BatteryWorld**

**10% OFF**

FOR TOYOTA LANDCRUISER CLUB MEMBERS



**POWER YOUR PASSION**

**13 17 60**

T & C's apply - see local store for details  
 SA members only. Proof of membership may be required.  
 Not to be used in conjunction with any other offers.

**JACKSONS**  
4X4 ACCESSORIES

*The Trusted Landcruiser Experts*



**08 8532 2550 | [WWW.JACKSONS4X4.COM.AU](http://WWW.JACKSONS4X4.COM.AU)**

**For Sale**

**TJM LandCruiser 2020**  
**200 series bull bar**  
**\$800**

Contact **Graham Murray 0468956492**



**Hayman weight distribution hitch for caravan towing**  
**High lift jack, R & R bead-breaker**  
**Set Rossa towing mirrors**

Any reasonable offers considered.  
**Bruce Bowey, Phone 0427889226**  
 Email: [bruka2@bigpond.com](mailto:bruka2@bigpond.com)

**For Sale**

Rosemary Abbot wishes to sell:

**iTech2000A Multifunctional Jump Starter**

Jump start Petrol Vehicles up to 7.0L and Diesel vehicles up to 4.5L New price \$250, sell for **\$150**.

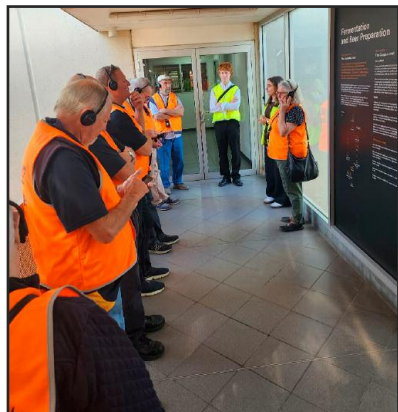
**Landcruiser, white 2012 200 series, Altitude**  
 auto V8 turbo, 179180 km Rego S 649 BYX until 8th July. Extras include fitted UHF radio, dual batteries, GMV upgrade with raised suspension, roof rack, solar panel, snorkel, drawers and storage in rear, including fridge space for a 50L, fitted air compressor pump and freshwater Jerry can. Bridgestone Desert Duellers tyres with 40% left, second set with 20% left, second spare on alloy rim needs replacing  
 Currently being detailed. **\$52,000**  
 Contact **Vlad Humeniuk 0408825144** if interested.



# Coopers Brewery Tour

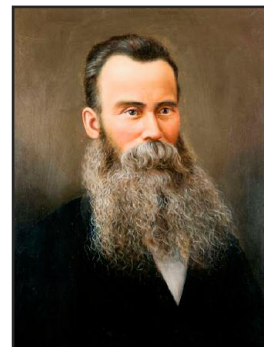
On 8th April, 10 enthusiastic beer connoisseurs gathered at the Adelaide icon, Coopers Brewery, out on Regency Road Regency Park to be taken around their beer making facility by one of their staff.

After being outfitted with the regulation hi-vis vest we were escorted to a small amphitheater and shown a short video to show the basic processes of the factory from start to finish of the beer making process.

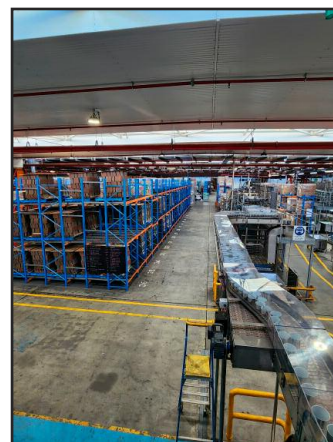


From there, onwards to a full tour of the factory workings with our young guides taking us through the areas and types of the various beers that were being produced.

Apparently the original brew was a recipe passed along from a Mrs. Cooper ( who was gravely ill ) to her husband with the thought that it would be used as a therapy to boost her up and return her to vitality. Unfortunately she passed away but by then the miracle elixir was being made for a number of friends and it grew from there.



The factory is huge in itself and supplies 80% of its own power which means it is quite a green type of facility. The factory is over a stream that is too salty to use in the beer making process but is refined by reverse osmosis. From there various additives are put into the refined water to mimic the water from various regions in Britain for the true English water flavour used in the old country.



As it happened, the brewery was in the process of capping /topping cans of Coopers Pale Ale, There were literally thousands and probably millions of cans being processed, an amazing array of machines and robots to keep it all running smoothly with just a few humans to ensure it was functioning correctly. To grasp just how many cans or bottles are produced in a short time was mind boggling and to think a number of processes happen 24hrs a day.

Once the main part of the tour had finished we all headed back to where we had begun our excursion to go into the beer tasting room to listen to Chelsea explain about the various beers that were being poured for us. From very light flavoured lager to quite heavily flavoured IPA beers to their very dark stout. She explained why and how the various beer products were made and adjusted to cater for modern taste expectations as well as keeping the older established beers available as well. Especially the stout !!!!!

After that informative chat and a jolly good bit of tasting, it was into the restaurant for some delicious tucker for lunch ! It was a very informative and enjoyable time ! Much more than just a beer tasting .

**Trevor Duggan**



# GOOLWA BEACH RUN

Some 20 members enjoyed the run to the Murray River Mouth this year along Goolwa Beach. It was a few days after the algal bloom reports from Waitpinga and nearby Middleton so a few enquiries were made to ensure it was safe to proceed. Seemed Ok so off we go including a few 'first timers to the mouth'.



Reports over summer that the beach had become a bit trickier proved to be correct (believed to be due to sand erosion), so the best start is with a very low tide. This was 0.30 metre at 10am so an early morning run was selected. All assembled at 11am for the traditional 'airing down' before the run to the mouth. The last km or so is now along a narrow strip of sand with limited opportunity to pass.

We were held up by 2 vehicles ahead of us who both got bogged. Darryl offered max trax to get the guys out who had no shovels or other equipment, and of course had not deflated tyres. After getting them going again we reached the mouth with little fanfare.



Lunch was a club prepared sausage sizzle with Darryl and Paul Hoskins on the BBQ tools.

It was a mild day with a very moderate breeze so quite enjoyable on the beach and we had time to sit, enjoy, and as we are inclined to do, 'chew the fat, as well as the snags!

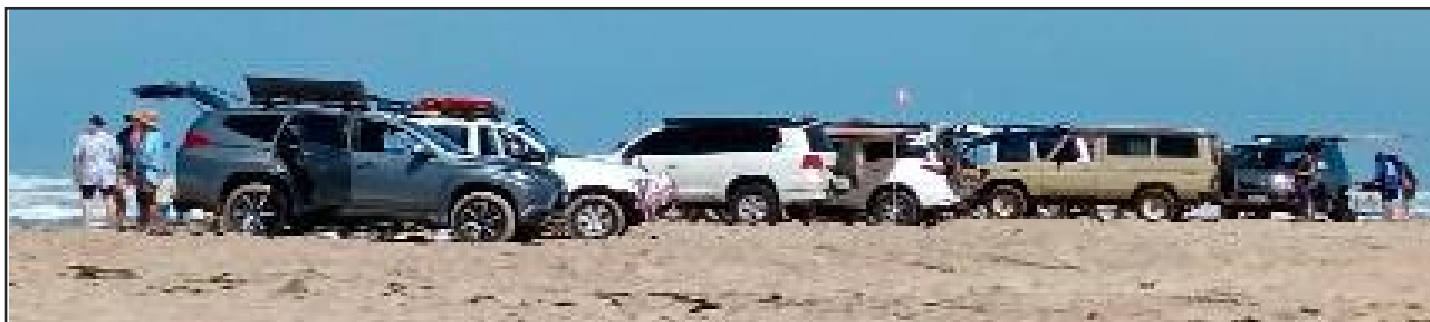
We returned at 2 pm with even less beach, a single defined rather soft track with no room to pass unless you 'took a bath' so

we ran a single vehicle at a time calling the next vehicle through once past the tricky bit.



After airing up, the plan was to enjoy a drink at the Surf Life Saving Club but we were too early for their afternoon opening, so headed for home. John Opie took his daughter, son-in-law and 2 grandkids who now have a better understanding of why John goes 4 wheel driving.

**Darryl Royans**



## FOR MAP COLLECTORS

A folder of 36+ Canning Stock Route natmaps (mostly 1:250,000 and a few 1:1,000,000) purchased 1993 for a planned trip along the CSR that never eventuated because of the untimely death of the purchaser.

Cost: suggested by the partner of the deceased – a donation to the RFDS (sa) of say \$25.00.

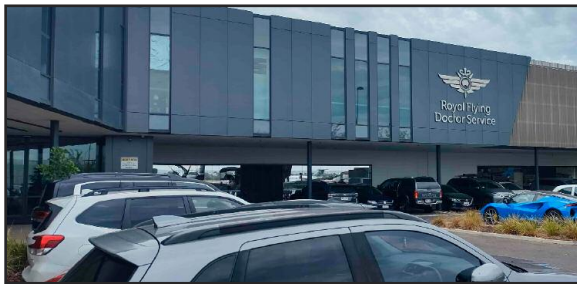
For further information contact **Graham West** (TLCCSA member since 1977) on **0417 896 798**

# Royal Flying Doctor Service Tour



Royal Flying Doctor Service

Our club and members have always been strong supporters of the Royal Flying Doctors Society of SA/NT. We were very lucky for Pam Humeniuk to have arranged for 20 club members to take a guided tour of the RFDS Facility at the Adelaide Airport precinct located at 1 Tower Road.



Parking at RFDS is quite limited with just 3 parking spaces made available. Attendees were directed to park their cars near the McDonalds at Harbour Town. Vlad Humeniuk, Peter Harper & Darryl Royans then chauffeured everyone to RFDS. Thanks to them for helping out.

The external look of the facility is crisp & clean and matched the inside perfectly especially given it is a working hospital.



All signed in at the foyer, paying their \$10 donation in appreciation. Our RFDS host provided a background of the facility. The foyer also gave us a sneak peek at the operational maintenance hangar, which we would view more closely later in the tour.



Next stop was the observation deck for a close up look at the RFDS aircraft on the runway apron and the operating runway. RFDS flights get priority over all flights should the need arise. Even the past Queen's flight was delayed on that basis.



It was then back inside to the large boardroom for a presentation on the various state RFDS operations, the aircraft they operate and range of services provided.

One statistic highlighted was that every 10 minutes RFDS SA/NT provides at least some service to the public, be that even using the service to dispense medications remotely.



That equates to 47,000 patients a year. Just some of the other amazing annual statistics were:

- 9,000+ Patients transferred by aeromedical aircraft
- 5,600+ Face-to-face primary health consultations
- 7,400+ Digital health consultations
- 1,200+ Community health vaccinations
- 1,000+ Patient transports by road ambulance
- 1,400+ Oral health consultations
- 850+ Face-to-face mental health consultations
- 50+ Patients supported by Aboriginal Health Co-ordinator

Part of the presentation included a view of the RFDS Live Flight Map. Available to view at:

<https://www.flyingdoctor.org.au/map/>

**article concludes on page 22.**





# club merchandise

PRICES SUBJECT TO CONFIRMATION



Bisley L/S shirt \$49.45



Polo Shirt \$30



Rugby Top \$47



Flash Jacket \$52.50



Reversible Vest \$60



Stadium Jacket \$77.50



Closed Frt Shirt \$47.45



Beanie \$17.50  
Knitted Acrylic Navy



Bucket Hat \$17.50



Cap \$17.50



JB'S Polar Vest \$33



Full Zip Polar \$42.50



Half Zip Polar \$40.50



Drill Shirt \$46.45



Metal Club Badge \$20

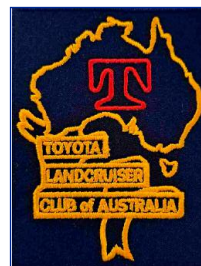
## GET DECKED OUT !

Prices include embroidered club logo.

Add your name for \$5.00, Add State Logo for \$7.50

All orders require payment either at the next General Meeting or EFT to the **TLCCSA - MEMBERSHIP** account (pg 22) and don't forget to include your surname-initials/apparel in the detail-reference field. Please see Carola Sanders at the next meeting.

**Sizes:** Mens: S, M, L, XL, XXL, XXXL.  
Ladies: 6, 8, 10, 12, 14, 16, 18



Cloth Badge  
\$15.00



Cloth Badge  
\$8.50



Sand Flag \$10  
Run Out Sale

## FOR SALE The ULTIMATE Off Road Camper Trailer.

1 X Ultimate Xplor off road camper trailer 2014, very good condition, ample storage, strong but lightweight, many extras including solar panels, verandah etc. \$484TOZ.



Price \$36000 **NEGOTIABLE** Ron/Robyn Dearing 0415708931

## For Sale

## LandCruiser 200 Cargo Barrier.

Includes all parts to install.  
Replaced as I had drawers installed and therefore had to change to half barrier. Drawers do not fit with full cargo barrier.

Cost: **\$200**

Contact Edmund Morries  
emorries@tpg.com.au





# HOW MUCH DO YOU TRUST YOUR CLUTCH?



## INTRODUCING THE FORTIFIED PLUS CLUTCH

In the split second between changing gears on a steep incline, when there is no room for error, will you be worried about losing control, or confident that you're fitted with the right clutch?

With today's generation of 4WD enthusiasts who love to challenge their vehicles and themselves, the forces moving through your clutch system have never been stronger or more important.

Originally engineered for armoured vehicles, the **TERRAIN TAMER FORTIFIED PLUS CLUTCH** provides up to 80% increase in torque capacity, and revolutionary Clutchtex Kevlar Technology offers 2-3 times the longevity in the clutch disc, as well as significantly smoother engagement without shudder.

For information visit [terraintamer.com](http://terraintamer.com) or call **1300 888 444**







From there we split in to 2 groups. Group 1 (left) headed to chat with the Dental Team and Group 2 headed to the maintenance observation deck.

The Dental Team spend a week away at a time providing dental services. The photo boards showed how they need to pack all gear - including dental chairs. Very impressive and great commitment to the community.



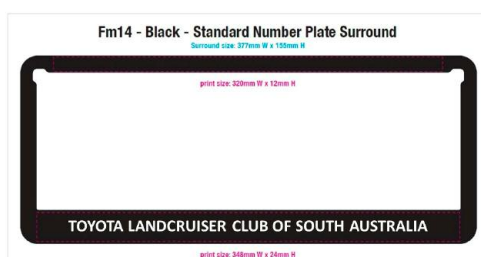
At the Maintenance Hangar observation deck, one of the engineering team explained that even that they are next door to the Pilatus aircraft hangar operations, RFDS SA/NT do all of their plane maintenance inhouse. They even undertake external contract work, including for the NT Police given the aircraft are in their hangar. We could view engines being stripped down and serviced. RFDS SA/NT staff even travel overseas to bring new aircraft back into SA.



At the end of the tour, we had a group photo out front.

As the weather was mild, many of the members took the opportunity to take the short walk back to their cars at Harbour Town, with a few still electing to be chauffeured. We then headed off for lunch at the Holdfast Hotel. Another well organized club event.

**Written by Andrew Strain**



**TLCCSA  
Number Plate  
Surrounds  
Now Available  
\$10 per pair**  
Order from Carola Sanders



# TLCCSA - Paying by Direct Debit

## 1. Instructions for those paying **MEMBERSHIP or TRAINING FEES** by direct crediting (excluding credit cards)

- Please ensure when inputting your deposit transfer that your surname plus initials are included in the detail / reference field.
- Once receipt number is issued for the deposit please email this receipt to the TLCCSA Treasurer, [treasurer@tlccsa.asn.au](mailto:treasurer@tlccsa.asn.au)

Bank	Beyond Bank, Modbury
Account Name	Toyota Landcruiser Club of Australia (SA) Inc
BSB	325 - 185
Account number	0403 8506 <b>(Note - New Account Number)</b>

## 2. Instructions for those paying for **TLCCSA SOCIAL CLUB ACTIVITIES** by direct crediting (excluding credit cards)

Bank	Beyond Bank
Account Name	Toyota Landcruiser Club of Australia (SA) Inc Social Club
BSB	325 - 185
Account number	0403 9446 <b>(Note - New Account Number)</b>



## We Fix 4WD's

Professional 4WD Repairs & Enhancements by 4WDDrivers



4WD Routine, Pre-trip & Log Book Servicing,  
Repairs, Suspension & Wheel Alignment

Alltrac 4WD 305 South Road Mile End 5031 Ph: (All Hours) 08 8234 6877 Fax: 08 8234 6833  
[alltrac4wd.com.au](http://alltrac4wd.com.au) E: [sales@alltrac4wd.com.au](mailto:sales@alltrac4wd.com.au)

# NEW

## ELECTRIC BUG BRINGS YOU THE

# OVERLANDER



BY GARMIN



## THE FEATURES

- Use the Garmin Explore™ app to easily sync<sup>1</sup> your waypoints, tracks and routes across your Overlander device, smartphone and desktop
- Use the Garmin Explore™ app to download additional maps, such as satellite imagery and USGS quad sheets on 64 GB of storage
- Preloaded with iOverlander™ points of interest and Ultimate Public Campgrounds, so you don't need a cell signal to find the best-established, wild and dispersed campsites
- Powered magnetic mount that comes with a suction cup or RAM ball compatible adapter
- Integrated pitch and roll gauges help you and your vehicle navigate difficult terrain
- Preloaded street maps with turn by turn directions for Australia and preloaded topography, including public land boundaries,
- 4X4 roads, forest service roads, waterways, trails and other land use data



PAIR IT WITH THE INREACH MINI AND USE IT TO TEXT

The Overlander can also connect to your phone through your InReach Mini and allow texting and phone calls. From anywhere on the planet, InReach Mini is your go to connect for maintaining off grid contact.



## BC35 REVERSE CAMERA



A quality backup camera like the Garmin BC 35 can significantly enhance rearward visibility for drivers and, thus, help minimize the risk of "blind zone" accidents whenever your vehicle is moving in reverse. Pair it with the Overlander for a Dynamic Duo

# GARMIN

SPECIAL GARMIN DEALER OFFER

## ELECTRIC BUG

LEADING GARMIN GPS DEALER AND GPS EXPERTS  
BRING THIS IN FOR EXCLUSIVE DISCOUNTS AND ADVICE



Find us  
on facebook

[www.electricbug.com.au](http://www.electricbug.com.au)  
08 8346 9234



199-203 Torrens Rd, Ridleyton SA 5008

10% OFF ON ANY GARMIN PURCHASE IN STORE