



Voice of the Toyota LandCruiser Club of Australia (SA) Inc

ABN 61 772 482 212

July 2025

Next General Meetings:

Monday
28th July, 2025

Monday
25th August 2025

LandCruising Australia Wide

In this issue

President's Report
Club Yearly Calendar
Events Calendar
Training Calendar
Club Merchandise
For Sale / Buy

Reports -

Arkaroola Cactus Cull
Driver Training - Morgan
Bendleby Ranges

Features -

Service Provider of Month
Trips Medical &
Emergency Information
50 year History Book

The Secretary,
PO Box 252
Kent Town SA 5071

Email:
secretary@tlccsa.asn.au

www.tlccsa.asn.au

Print post approved 100018657



A MEMBER OF FWDSA



Cornes Toyota



CLUB SPONSOR

www.facebook.com/ToyotaLandCruiserClubSouthAustralia



We Fix 4WD's

Professional 4WD Repairs & Enhancements by 4WDrivers



4WD Routine, Pre-trip & Log Book Servicing,
Repairs, Suspension & Wheel Alignment

Alltrac 4WD 305 South Road Mile End 5031
Ph: (All Hours) 08 8234 6877 Fax: 08 8234 6833
alltrac4wd.com.au E: sales@alltrac4wd.com.au



from your President

Hi All,

I am impressed with the high level of involvement and work our members put into this club. Your committee works conscientiously within their portfolios to ensure services are delivered to a high standard and TLCCSA remains one of the best clubs. As impressive is the dedication and hard work from members in many different capacities; our social team sourcing raffle prizes, selling tickets, preparing tea/coffee at

general meetings and organising and leading many social events; our cactus cullers logging cactus results, compiling reports, organising evening entertainment, quiz nights, games nights while away on trips; our trainers and assessors for organizing and delivering education and training opportunities; our trip leaders who plan and lead many wonderful trips along with those who volunteer to write trip reports and give trip presentations. Let's not forget the team who have compiled and written the next 10 years of TLCCSA book and have been organising the book launch, a great evening to be held at our sponsor Cornes Toyota, which I encourage you to attend. A huge and sincere thanks to all of you who give something to your club.

The shortest day of the year has passed. The days will become warmer, and our countryside will become one of springtime beauty.

Many are attending the Christmas In July in the Willmington area, keen cactus cullers are venturing into the northern Flinders above Blinman and socially is the Charles Sturt Museum tour, Adelaide Planetarium visit and Woodside Foodie Tour coming up. Safe travels to everyone.

The education team have a fantastic package of events coming up with a two-day driver theory session followed by sand driving training at Peake, ascent/descent driving at Morgan, trip planning session and a trip pre-departure vehicle check session. A great opportunity to immerse yourself and your co-driver in everything 4WD.

Several trips are coming up including the annual Lions Club of Yankalilla, Fleurieu Peninsula Run which is a fantastic one-day trip where you get to travel through private properties and see the southern Fleurieu from different perspectives other than the bitumen roads.

We are always looking for guest speakers. If you know of anyone who would be a good guest speaker at a general meeting, email their details to Paul Hoskins via vpres@tlccsa.asn.au

Safe adventuring.

Simon

Simon Critchley
TLCCSA President

ANNUAL MEMBERSHIP RENEWALS ARE NOW DUE

At the Club's recent AGM membership renewals were set at \$100 or \$80 if you live more than 70km from the GPO. They fall due from 1 June with 60 days to pay. A \$15 penalty applies if you have not paid before August 1st.

You can go to the Club Web page www.tlccsa.asn.au and effect your membership renewal. Click on the member's login at the very top that will then take you to the member's zone. If you have not activated your membership access you will need to do that first. You would have received an email on that a few weeks ago. See page 23 for more details on how to pay.



The **28th July 2025 General Meeting** will be held at ~ **West Adelaide Football Club**
57 Milner Rd, Richmond.

Open at 6.45pm. It is important that you book your spot - use booking code. <https://www.trybooking.com/CWXDS>



Front Cover Photo:

Canning Stock Route - Wiluna
John Potts & "Sherman"

Banking Details: pg 23

Club Contacts: pg 4

Club Yearly Calendar: pg 5

Trip Reports & Features:

- Arkaroola Cactus Cull 25 pg 12
- Driver Training - Morgan pg 17
- Bendleby Ranges pg 18
- Trips Medical & Emergency information pg 22
- 50 year History Book pg 23

Training 2025: pg 9

Trips / Socials: pg 6

Club Merchandise: pg 20

For Sale / Wanted: pg 16 & 20

Next General Meeting: AGM

28th July 2025, 7.30pm,
West Adelaide Football Club.

Trip Reports:

Christmas in July

Guest Speaker:

Matt Raymond, Station Officer
Process & Training to be a SA
Firefighter

Newsletter Articles Deadline:

Friday 1st August 2025

Please ensure submissions are lodged prior to the deadline to support the newsletter timelines. Please send articles and separate original photos to:

newsletter@tlccsa.asn.au
and remember to **include the names** of members when submitting photos.

club contacts

2025-26

Committee		Email	A/H Phone
President	Simon Critchley	pres@tlccsa.asn.au	0438 322 997
Vice President	Paul Hoskins	vpres@tlccsa.asn.au	0418 828 637
Secretary	Helen Brettig	secretary@tlccsa.asn.au	0421 114 476
Minute Secretary	Pam McDonald	minsec@tlccsa.asn.au	0409 869 796
Treasurer	Heather Combeer	treasurer@tlccsa.asn.au	0403 955 228
Education	Peter Harper	education@tlccsa.asn.au	0410 526 317
Environment	Michael Polacek	environ@tlccsa.asn.au	0413 003 038
Social	Pam Humeniuk	social@tlccsa.asn.au	0418 825 137
Trips	Pin Needham	trips@tlccsa.asn.au	0437 420 099
Advertising/Publicity	Gordon Combeer	advertise@tlccsa.asn.au	0413 838 914
Immediate Past President	Vlad Humeniuk	ipp@tlccsa.asn.au	0408 825 144
Committee	Andy Davis	ajdavis7@outlook.com	0417 805 405
Committee	Larry Coaker	larrco119@gmail.com	0419 230 036

Non - Committee Officers

Membership	Graham Adams	memb@tlccsa.asn.au	041 7854 318
Newsletter	Brian Stone	newsletter@tlccsa.asn.au	0419 998 834
Welcoming	Vladimir Malcik Graeme Brettig	welcome@tlccsa.asn.au	0409 607 624
Assistant Education	Murray McClay	edusub@tlccsa.asn.au	0419 031 046
Assistant Environment	Ian Frost		0466 988 801
Facebook Editor	Andrew Strain Darryl Royans	facebook@tlccsa.asn.au	0413 804 698 0414 307 280
Historical Vehicle	Darryl Royans	clubrego@tlccsa.asn.au	0414 307 280
Club Registration	Michael Polacek		0413 003 038
Radio/GPS	Peter Harper	radio@tlccsa.asn.au	0410 526 317
SAAFWDC Delegate	Larry Coaker Edmund Morries	delegates@tlccsa.asn.au	0419 230 036 0439 034 866
Technical	Peter Young	technical@tlccsa.asn.au	0418 846 544
Merchandising Officer	Carola Sanders	merchandise@tlccsa.asn.au	0412 632 658
Webmaster(s)	Monte Weeding Craig Marchant	webmaster@tlccsa.asn.au	0408 832 771 0410 021 101
Property Officer	Larry Coaker		0419 230 036
Hon. Auditor			
Conservation SA Delegate	Ricard Trevena	rhtrevena@gmail.com	0417 864 577

DISCLOSURE REQUIREMENTS

As part of the disclosure requirements for our Public/Directors & Officer Liability insurance, please contact a committee member with relevant information if you are or become aware that:

- There has been or there is now pending any claim against any Director or Officer in their capacity as either Director or Officer of this club or any other organization.
- Any Director or Officer has ever been subject to disciplinary action, been fined or penalised or been subject to an enquiry in their capacity as a Director or Officer of the club or any other association.
- You have any knowledge or information of any incident, act, error or omission that may give rise to a claim of the type as would be covered by the policy,

Welcome!

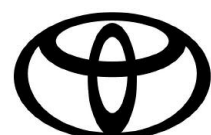
The club would like to extend a warm welcome to the following new member for the month of July 2025.

- Sarah Norton & Mitchell Kraemer from Hallet Cove
- Paul & Dianne Melville from Mitcham
- David Perry & Elaine Atkinson from Bellevue Heights

May your membership with the club be a long and memorable one.

Cornes Toyota

Driving excellence in everything we do



TOYOTA

If you are in the market for a new or used car please contact:

Daniel Munday

General Manager

Contact: M 0421 139 545
D 8179 0034



46 Belair Road
HAWTHORN SA 5062
phone (08) 82721488

club yearly calendar - 2025

July 2025

Fri 11th - Sun 13th ~ Christmas in July - Wilmington
Mon 21st - Sun 27th ~ Gum Creek Cactus Culling
Sun 27th - Sat 2nd Aug ~ Moolooloo Cactus Culling
Mon 28th ~ General Meeting, WAFC

August 2025

Sun 10th - Sun 24th ~ 4WD Tinnie Trip - Cooper Creek
Wed 20th ~ Charles Sturt Museum
Mon 25th ~ General Meeting, WAFC
Mon 25th - Sun 31st ~ Kudriemitchie
Sat 30th - Sun 31st ~ 4WD Theory

September 2025

Sat 6th - Sun 7th ~ Peake Sand Driving
Wed 10th ~ Adelaide Planetarium Visit
Fri 12th ~ 50 Year Book Launch - Cornes Toyota
Mon 22nd ~ General Meeting, WAFC
Sun 28th ~ GPS (Theory & Practical)

October 2025

Fri 3rd - Mon 6th ~ Ralph Abbott Argadells Trip
Sat 11th ~ Lions Club Yankalilla Run

Wed 15th ~ Gourmet Trail

Sat 18th - Sun 19th ~ Ascent / Descent - Morgan

Sun 19th - Sat 1st Nov ~ Gawler Ranges & Eyre Peninsula

Sun 26th ~ Trip Planning

Mon 27th ~ General Meeting, WAFC

November 2025

Sun 9th ~ Wheel Change and Pre-Departure

Mon 24th ~ General Meeting, WAFC

Fri 28th - Sun 30th ~ Christmas Party - Port Elliot

January 2026

Mon 26th ~ General Meeting, WAFC

More Trips ? - "You can help" Know of a place you'd like to visit & would like to share it with us? Think about it and let us know. If you're not able to be the trip leader for your suggestion, then the Committee will seek some one who may be willing to do so. So have a think about it and let us know about a weekend or long weekend trip.

Talk to our Trips Officer - Pin Needham (trips@tlccsa.asn.au)



\$200 Reward Card*

Receive \$200 for referring friends who purchase a vehicle from us.

Cornes Toyota
46 Belair Road
Hawthorn, SA 5062
T 08 8272 1488
cornestoyota.com.au

OH WHAT A FEELING



Cornes Toyota provide benefits for both members and the Club. The Spotters Card is for vehicle purchases by members or referred friends with the Club then receiving a payment direct from Cornes.

THE POWER OF

REDARC

Purchase a REDARC product on-line and get 10% discount.

Contact Advertising & Publicity officer for details.



Special Offer for TLCCSA Members



trips

Pin Needham

Trips Officer

Telephone: 0437 420 099

Email: trips@tlccsa.asn.au



social

Pam Humeniuk

Social Officer

Telephone: 0418 825 137

Email: social@tlccsa.asn.au

trip ratings

SCENIC: Bitumen & dirt roads, limited 4wding, lookouts, flora and fauna of the local area, other points of interest.

EASY: Mainly off bitumen on formed tracks, some 4wding, no steep inclines or declines.

MODERATE: Bush terrain, beach terrain, some inclines or side slopes, soft sand or mud areas, easy creek crossings.

HARD: Rough terrain, steep inclines, steep side slopes, rough creek crossings, possible towing and/or snatching.

DIFFICULT: Very rough terrain, very steep inclines, steep side slopes, slippery conditions, difficult creek crossings, some towing, snatching and or winching.

How to Claim your Trip Leader Incentive and other Trip Expenses

- Go to the website: tlccsa.asn.au Log in via the Members Login (top right hand corner), which will take you to the "Members Zone." Click on the "Member Downloads" then click on Expenditure Claim Form.
- Fill out the eform for your Trip, include all receipts and forward the completed form to the Treasurer for reimbursement.
- Make sure you include your Bank account details accurately.
- Then, Hassle Pin for your bottle of wine.

events calendar

Register now via
trybooking.com

1. Xmas in July - Wilmington

Date: Fri 11 - Sun 13 July 2025

Leader: Pam Humeniuk

Rating: Scenic / Easy

Convoy: Unlimited **(41 booked)**

Location: Stony Creek Bush Camp & Caravan Park Wilmington SA

Cost: \$5 per head.

Comment: Powered and non powered sites available. Ensuite rooms and bunkhouse rooms (could take up to 4 people, bunks etc.) available.

Please ring & book your own site. Say that you are part of TLCCSA booking. Ph: 0488 156 850 – 1st in best dressed

Stony Creek Bush Camp is a private bush camp located 2.5kms outside the town of Wilmington in the Southern Flinders Ranges, about 3.5 hours drive north from Adelaide.

Friday - pizza night \$15 per head. (pay on the night)

Saturday - The Big Cook Up. The Social committee organise the meat for our "Christmas dinner" and the trimmings, gravy, etc. plus sweets. You bring the veg.

Camp Cooking Competition to make your vegetables into a parcel to be cooked on the open fire. Think a swan, or a Toyota car! It's up to you

Mulled wine supplied, bring your own port if that's your fancy.

BYO every thing else. Chairs, small tables, cutlery, crockery etc.

There will be a fun Kris Kringle . Uni-sex gift, bring it along wrapped up.

Exploring opportunities on Saturday & Sunday

<https://www.trybooking.com/DBCVC>

— # —

2. Gum Creek Cactus Cull

Date: 21 – 27 July 2025

Leaders: Michael Polacek

Convoy: 24 people. **(15 booked)**

Rating: Scenic and moderate.

Moderate tracks accessing cactus areas and rest day trip is usually moderate. This working bee is for one week of culling, identifying and recording wheel cactus eradication

efforts.

Come and join us on Gum Creek Station in the Flinders Ranges. We have been doing this for 16 years. Join our expert team and have some fun. Some accommodation available in the shearers quarters or bring your van, camper trailer, tent, etc.

Persons attending Gum Creek Station are most welcome to then continue down the track to Moolooloo after completion on 27 July.

<https://www.trybooking.com/CXKIP>

— # —

3. Moolooloo Cactus Cull

Date: 27 July - 2 August 2025

Leaders: Michael Polacek

Convoy: 22 people. **(22 booked)**

Rating: Scenic and moderate. Tracks accessing cactus areas and the trip on the rest day will be moderate.

Moolooloo Station is 25 km north of Blinman. This working bee is for 1 week of culling, identifying and recording wheel cactus eradication efforts.

There are fabulous shearers quarters with toilets and showers. Vans and camper vans can be accommodated as there is plenty of room.

The station has some fantastic drives and a history to be explored.

<https://www.trybooking.com/CXKKC>

***** CANCELLED *****

4. Tinnie Trip to the Cooper Creek 2025

Date: Sun 10 - Sun 24th August 2025

Location: Coopers Creek Ferry Crossing Birdsville Track

Leaders: Michael Polacek / Peter Young

Convoy: min of 3 tinnies plus Support crew. **(4 booked)**

Comment: Cooper Creek rises west of the Great Dividing Range at the junction of the Thomson & Barcoo rivers, the only place in the world

where 2 rivers join to form a Creek. It flows for 1300 km through south west Queensland before crossing into South Australia to become one of the 3 major watercourses to flow into Lake Eyre (Kati-Thandi). In most years it fills some channels & waterholes before evaporating without reaching Lake Eyre (Kati-Thandi). In wet years the Cooper can flood the Channel Country, crossing 3 deserts before getting to Lake Eyre.

After a 2-day drive from Adelaide, the trip will start at the ferry crossing of the Cooper on the Birdsville Track. The plan is to launch the tinnies upstream from the ferry then travel to an area suitable for a base/fuel camp. The Tinnies will venture further up stream where another fuel dump will be established. Each participant must be completely self resourced, Tinnie(11-12 foot), 15 hp motor, ability to take 220 litres of fuel, camping equipment, radios, food and water for at least 7 days on water. A Zodiac will be towed on the water to carry fuel for part of the journey. Support vehicles towing fuel trailers will be needed as well as being backup for the Tinnie Troupe.

<https://www.trybooking.com/DCUIV>

*** NEW ***

5. Charles Sturt Museum

Leader: Denise Malcik

Date: Wed 20th August, 2025
10.30am – 12.30pm

Cost: \$ 15 per head, includes Devonshire Tea.

Optional lunch at a venue to be advised after the event. (At your own cost)

The Charles Sturt Museum Precinct is centrally located in the suburb of Grange. Grange being the name of Captain Charles Sturt's home from 1840 – 1853. Sturt could claim to be one of the foremost explorers of Australia, opening up Australia to settlement by virtue of his expeditions to the Macquarie Marshes, along the length of the River Murray and into the heart of central Australia.

He was considered a Founder of South Australia as his book "Two Expeditions into the Interior of Southern Australia" led to the English

Parliament to determine that South Australia should be settled as a Province under the Wakefield Plan.

<https://www.trybooking.com/DCRYU>

— # —

6. Kudriemitchie Outstation Trip & Working Bee

(subject to flood conditions)

Date: August 25 to 31, 2025

Leader: Steve Miller

Convoy: Unlimited, **(4 booked)**

Terrain: Gravel roads with rocks shale & bulldust. Long distances, 1150 km. Suitable for caravan, Off Road Van, Camper Trailer, Tents

Comment: Situated about 1140 km north from Adelaide, and 85 km northwest of Innamincka on the Coongie Lakes Track (Montepirrie Track) is Kudriemitchie Outstation, once a pastoral outstation used to accommodate the mustering parties away from the main homestead at Innamincka. TLCCSA members have been involved since 1995, renovating & restoring the Outstation mostly under the influence and enthusiasm of the late Steve Golley, DEW and Innamincka Station (Santos). This site is now heritage listed.

In August 2025 Innamincka will be the NPWS Park of the Month. NPWS will be shining a spotlight on Innamincka and no doubt travellers will visit Kudriemitchie. This trip is part tidying up and presentation and part relaxation (trying to catch elusive Yellow Belly fish). There is likely to be an earlier trip at short notice to assist and plan the tasks.

Equipment: Normal recovery gear UHF Radio

<https://www.trybooking.com/CZJXT>

— # —

7. Fraser Island (K'gari) Scenic 2025 EOI

Date: Saturday 30 August 2025 - Sunday 7 September 2025

Leaders: Craig Marchant

Convoy: 22 people. **(6 vehicles booked)**

Rating: Scenic and moderate

Comment: Your opportunity to visit the world's largest sand island. The main way around the island is via the beach, which is generally easy to drive on, with a 80kph speed limit. The inland tracks can be rough due to the volume of traffic. More remote

tracks have the potential to be softer and rutted out, again simply due to traffic and not being maintained.

Start at Rainbow Beach at 5:00pm on August 30, staying overnight at Rainbow Beach Caravan Park, 308 Carlo Road, Rainbow Beach Qld 4581 before taking the ferry at Inskip Point to K'Gari on the 31st. Bush camping with facilities except for 1 night. Be aware of the dingos. Contact trip leader for detailed itinerary and more information. No caravans or trailers.

Essential gear- Long handle shovel, basic recovery gear, compressor, tyre deflater. Desirable - traction boards. Permits are required for vehicles driving on K'gari as well as separate camping permits at designated sites and dates. There is a ferry charge of \$140 return. Contact the trip leader for more details.

Also remember that Rainbow Beach is approximately 2200 Km from Adelaide, allow 2-3 days each way for this journey.

<https://www.trybooking.com/CXKLA>

— # —

8. Adelaide Planetarium Visit

Date: Wed, 10th Sept 2025 10:15am

Leader: Denise Malcik

Convoy: 40 **(4 booked)**

Cost: \$20 per person

Adelaide Planetarium, University Boulevard, Mawson Lakes

The Adelaide Planetarium will take you on an immersive journey through space, with stars and constellations coming alive during the stunning night sky presentations and full dome movies. 10.15 am start. \$20 per person Option of lunch afterwards at own expense.

<https://www.trybooking.com/DBFMV>

— # —

9. Ralph Abbot Argadells 2025

Dates: Fri 3 - Mon 6 Oct 2025

Leader: James & Linley Edwards

Convoy: Unlimited **(7 booked)**

Rating: Moderate to Hard

Comment: Rocky ascents and descents with some steep sections. Beautiful views across the surrounding landscape to Port

Augusta, Lake Torrens.

Argadells Station 2641 Ardenvale Rd, 28km North of Quorn. A working sheep property of 32 square Km's approx 360km North of Adelaide.

Various tracks ranging from Moderate to Hard. Must have low ratio and good clearance with 4x4 experience in ascent/descent.

Trip Details: Travel to Argadells on Friday 4 Oct. BYO everything. Camping will be at one of the property's bush sites (Wint's) so will necessitate being completely self sufficient. Suitable for semi offroad/offroad caravans, camper trailers & tents.

For those who wish to bring an onroad van, there is a Caravan park available at \$35/night (2 people) approx 5km from the bush camp.

Property access is \$50 per vehicle plus camping fee of \$15/adult/night.

We will order some firewood from the property (\$100 to be shared between the attendees once we have final numbers) but please bring a bag along to supplement this.

For more information see their website.

<https://www.argadells.com.au/>

<https://www.trybooking.com/CXKLJ>

*** NEW ***

10. Lions Club Yankalilla Run

Date: Sat 11th October 2025

Leader: Pin & Kim Needham

Rating: Moderate

Convoy: TBA

Cost: \$60 per vehicle

Comment: Popular run organised for 4WD clubs by Lions Club of Yankalilla. Gives you a different view and perspective of the Fleurieu Peninsula as you travel from Yankalilla to Cape Jervis through forestry land and private property, taking in Second Valley, Rapid Bay and the Starfish Windfarm.

Great for new club members but a favourite with members who have been around a bit as well. Meet at Yankalilla Oval at 9am. Bring your own morning tea, lunch and chairs,

<https://www.trybooking.com/DDHZP>

*** NEW ***

11. Gourmet Trail"

Date: Wed 15th October, 2025

Leader: Susan Vordermaier

Convoy: Unlimited

Comment: Tour Berenberg, Melbas Chocolates and Woodside Cheeses. and probably other surprises.

Save the date with more details to follow

.

— # —

12. Gawler Ranges and Eyre Peninsula 2023

Date: 19 Oct - 1 Nov 2025

Leader: Denise & Vladimir Malcik

Convoy: 6 vehicles (14 booked)

Rating: Moderate

Gawler Ranges NP with gravel tracks and sand driving on beaches on Eyre Peninsula.

Also time for walking, fishing and just relaxing.

Camping starts at Mambray Creek, then Gawler Ranges NP, Waganny Campground (2 nights), Coffin Bay Yangie Campground (4 nights) and Lincoln NPs. Summer Beach Campground.(4 nights)

Essential gear- Long handle shovel, basic recovery gear, compressor, tyre deflater, UHF radio. Desirable - traction boards and second spare tyre

Permits required for Mambray, Gawler Ranges, Coffin Bay & Lincoln NP. Participants to make their own campsite bookings. A 2 month pass available on line (\$54 per couple)

<https://www.trybooking.com/DACSL>

— # —

13. Moonarie Station, Gawler Ranges EOI

Date: TBA - Sept / Oct 2025 (7 -10 Days)

Leader: Leader / Coordinator required

Convoy: 10 vehicles

Rating: Basic

Comment: Moonaree Station is in the northern Gawler Ranges. It is being cared for by TLCCSA club members, Ary & Judy Christian for the last 18 months,

Assistance is needed for repairs, rehanging doors and other carpentry work. Stay in shearers quarters (basic accom with showers and toilets) or bring your own caravan, camper etc.

BYO suitable tools, (240v and battery operated). Materials will be on hand upon arrival.

Touring of property and Gawler Ranges can be arranged, Normal recovery gear, shovel etc required.

<https://www.trybooking.com/DCKWN>

*** NEW ***

14. Lets Party – Christmas Party Weekend

Date: Fri 28th Nov - Sun 30th Nov, 2025

Venue: Port Elliott Showgrounds Caravan Park

Leader: Pam Humeniuk & Committee

Cost: \$35 per head. Children under 12 Free of Charge

Convoy: Unlimited

Comment: A fun weekend, starting with an optional dinner at the Royal Family Hotel on Friday night and then on Saturday a fabulous Christmas Dinner, with many options of salads, meats and sweets, with all the trimmings

A great band playing all the tunes you like.

Sunday morning your social committee and volunteers will cook a great recovery breakfast.

All included in your \$35 per head for the weekend. What a bargain!!.

Kris Kringle is part of the fun. If you are a boy bring along a gift suitable for a boy, and if you are a girl.....(you get the idea!). Don't spend more than \$15.00.

Please all participate in this, its good fun and causes lots of hilarity. We have the whole caravan park booked out. Please go onto Trybooking and book yourself in. You will be asked to pay for dinner - \$35 per head. Children under 12 no cost.

cont'd page 11.

training calendar 2025

updated Nov 2024



Peter Harper

Education Officer

Telephone : 0410 526 317

email : education@tlccsa.asn.au



Murray McClay

Assistant Education Officer

Telephone : 0419 031 046

email : edusub@tlccsa.asn.au

FROM	TO	ACTIVITY	WHERE	FEES	DEPOSIT	INFORMATION
Wed 12th Feb 2025		New Members Night	SCC	Nil		https://www.trybooking.com/CXKJL
Sun 23rd Feb 2025		Tyre Repair	Ironbank	\$10 per person	\$10 per person	Fee covers the cost of materials and refreshments https://www.trybooking.com/CXKJM
Sat 1st Mar 2025	Sun 2nd Mar 2025	Theory	TBA	\$20 per person	\$20 per person	https://www.trybooking.com/CXKJN
Sat 8th Mar 2025	Sun 9th Mar 2025	Sand + Winching	Peake	\$40 per vehicle	\$40 per vehicle	Property access cost \$40 per car. No cost for basic training for enrolled members https://www.trybooking.com/CXKJO
Sun 4th May 2025		Caravan Safety Awareness	Barossa Valley	\$120 per couple		https://www.trybooking.com/CXPUF
Sat 17th May 2025	Sun 18th May 2025	Ascent - Descent	Morgan	NIL	\$30 per vehicle	No cost for basic training for enrolled members. Deposit refunded on Saturday night https://www.trybooking.com/CXKJP
Sat 28th Jun 2025	Sun 29th Jun 2025	Sand + Winching	Peake	\$40 per vehicle	\$40 per vehicle	Property access cost \$40 per car. No cost for basic training for enrolled members. https://www.trybooking.com/CXKJO
Sat 30th Aug 2025	Sun 31st Aug 2025	Theory	SCC	\$20 per person	\$20 per person	https://www.trybooking.com/CXKJR
Sat 6th Sep 2025	Sun 7th Sep 2025	Sand & Winching	Peake	\$40 per vehicle	\$40 per vehicle	Property access cost \$40 per car. No cost for basic training for enrolled members. https://www.trybooking.com/CXKJS
Sun 28th Sep 2025		GPS (Theory & Practical)	SCC	\$20 per person	\$20 per person	Fee covers cost of refreshments. https://www.trybooking.com/CXKJT
Sat 18th Oct 2025	Sun 19th Oct 2025	Ascent Descent	Morgan	NIL	\$30 per vehicle	No cost for basic training for enrolled members. Deposit refunded on Saturday night https://www.trybooking.com/CXKJU
Sun 26th Oct 2025		Trip Planning	TBA	\$20 per person	\$20 per person	Fee covers cost of refreshments. https://www.trybooking.com/CXKJW
Sun 9th Nov 2025		Basic Wheel Change and Pre-departure	Ironbank	\$10 per person	\$10 per person	Anyone enrolled in the training program who has not completed these two elements. https://www.trybooking.com/CXKJX

TLCCSA training team

TRAINERS:

STEVE MILLER

ASSESSORS:

ALLAN McINTYRE
DAVID ELLIS

GARY CHRISTIAN
GEOFF GREEN
GEOFF THOMPSON

JASON SABEENEY
MURRAY McCLAY
PETER HARPER

SHANE SAXBY
TONY VAN WYK
EDMUND MORRIES

TRAINERS: Conduct driver training

ASSESSORS: Conduct driver training & assessment

NOTE: All training sessions are subject to the availability of Trainers, Assessors and the number of member nominations. Small cost for advanced training and non enrolled members.

Cornes Toyota



Special service offer for Landcruiser Club Members

Service includes:

- Engine oil & filter
- Lube, driveshafts, universal joints and steering stops
- Check electric systems and lights
- Battery check and clean terminals
- Visual inspection of air conditioning and report
- Brake inspection

Plus free car wash and interior vacuum!

Please note this is not a book maintenance service

\$239

All 4WD vehicles

Loan car available by arrangement

Cornes Toyota

46 Belair Road
Hawthorn SA 5062
T: (08) 8272 1488
cornestoyota.com.au

Service opening hours:
Monday to Friday
7.30am - 5.00pm

OH WHAT A FEELING

SERVICE PROVIDER OF THE MONTH

With an African Flavour



We did a lot of sand driving with a heavily laden car in Botswana 2022 and found that the rear of the car was bottoming out too much. Knowing we would be doing the same route the following year, we decided to fit stiffer rear coils and also replace the shockers in our 2013 Prado 3L diesel (aka Pepe Le Prado). An alternative strategy was to slow down on the sandy tracks to resolve the problem but who wants to do that! We did slow down, however, as we moved deeper in to lion country.

The original coils and shockers were part of a GVM upgrade done by **Lovells** in Edwardstown and the upgraded parts also came from them. We could have chosen stiffer coils at the time but didn't. You live and learn!

During the installation it was identified that the lower bushings would also need replacing. The problem was though, we were in Cape Town and our mechanic was struggling to find replacement bushings; time was running out to start our group tour heading north into Namibia. A few emails to Lovells and they identified the part and provided me with material and bushing details. We went to various suppliers but had no luck. By accident, Heather spotted a **Terrain Tamer** sign. What in the heck are they doing here, I thought? We went in, told the guy what we were looking for, he came out to the car, double checked measurements and supplied the needed bushings. Another trip back to the mechanic and everything was sorted out. The new set up performed flawlessly under difficult conditions over the next 7 months in Africa.

So a belated thankyou to Lovell's for their quick responses to enable me to find a solution. A further big thanks goes out to Terrain Tamer for having an outlet in Cape Town.

Contact Details in Adelaide:

Lovells: 1300 407 785

Terrain Tamer: 1300 888 444

Gordon Combeer



Don't book for kids on Trybooking if they are under 12. Just send me a separate email.

You will also be asked to advise when you are arriving, whether you are camping and what size of van/camper/tent you will have. You will also be asked if you require power or unpowered

You do not pay any money for your camping at this stage. You pay for your camping fee powered per night \$30 per site or \$12.50 per person per night unpowered on arrival in November.

You are also asked to advise if you wish to attend dinner at the Royal Family Hotel on the Friday night. (It is a short walk from the caravan park to the hotel). This of course is at your own cost. The Showgrounds Caravan Park does not have cabins, Options are –

The Royal Family Hotel, 32 North Terrace, Port Elliott, is 500 m from the showgrounds (an easy flat walk) and has limited accommodation. 9 double rooms, 1 single room and a bunk room.

The rooms are traditional pub style accommodation located above the hotel. There are separate male and female bathrooms which are large and comfortable. Call the hotel 8554 2219 to book one of these rooms. Check with the hotel for current rates. Several members stayed there last year and found it comfortable.

Alternatively, The Breeze Holiday Park, Port Elliott, has other options,

from 3 bedroom cottages, two bedroom villas to budget cabins. 85542134. (prices of course vary enormously). This park is approx. 3 kms from the showgrounds so would necessitate driving on the Saturday night, unless we have enough people staying there and we can organise a small mini bus. (This can be worked out later)

If either of these options appeal to you as you don't want to camp, I would urge you to book now. You can always cancel later, both places highlighted to me that this is their busy period and they book out quickly.

<https://www.trybooking.com/DDCGY>

GENERAL

LET'S DO LUNCH CLUB

An ad hoc group who occasionally lunch (or it could be dinner) together to keep in touch and make new friends.

REGISTER VIA TRY BOOKING to indicate your interest. When an event is organised the organiser contacts all those registered and if you are free and the restaurant/venue appeals, you book in. No pre-paying – no permanent commitment.

Restaurant organisation is to be shared amongst those registered, with an emphasis on trying new and varied menus.

<https://www.trybooking.com/CHTKR>

SHOW & TELL

Tell us about your favourite gadget or item that is very useful in the home or whilst on safari.

Each month, a member can demonstrate the item in order to share innovation and knowledge. Send an email to Pam Humeniuk social@tlccsa.asn.au for further details.

She would love to hear from you.

Blaze Aid + Habitat for Humanity ~ Volunteer List

Requests from these organisations can occur at short notice so it's great to have a updated members list that we can call on.

Using TryBookings will give us an up-to-date list to of members to call on at short notice.

Putting your name on this list does not mean you are committed every time to go, it depends on your availability at the time.

Volunteers are often required to assist with towing trailers & materials, clearing rubbish and debris, etc. Fuel costs are generally re-imbursed.

If you would like to help as requests arise, please register via the link below.

<https://www.trybooking.com/BOEYF>

That's all for now folks!

Save the Date

"Get your motor runnin
Head out on the highway
Looking for adventure
On the Hungry Highway"

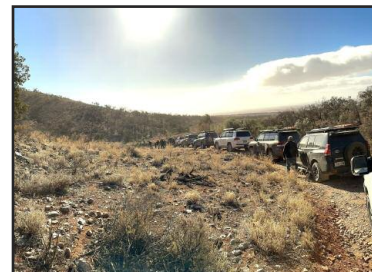
Then save the date of Kings Birthday weekend 2026.

We will be running a Bendleby Ranges long weekend trip again next year, June 6, 7, & 8th.

If you're looking for a weekend full of challenging 4-wheel driving, fresh air and a great social time, then this is the weekend for you.

Keep on the look out in the magazine calendar later in the year for further info.

James & Linley Edwards



2025 Arkaroola Cactus Cull

From May 8th until May 16th the TLCCSA visited the Arkaroola Wilderness Sanctuary for the second time to help with the control of a particularly nasty cactus, called Jumping Cholla (Cylindropuntia Prolifera). Unlike the Wheel cactus (Opuntia Robusta) found on Gum Creek and Moolooloo stations the jumping cholla is made up of sausage shaped segments joined end to end and branching to make up a rather formidable foe.



The team this year consisted of:

Graham Adams (Trip and Team leader), Ray Gedritis (Team Leader), Solveiga Asaris, Ian Frost, Pam Humeniuk, Vlad Humeniuk, Edmund Morries, Anne Morries, Russel Chaffey and Rob Duncan (a guest / Temporary member – but he does drive a Land Cruiser)

We also had the pleasure of the company of Claire McKendry from Landscape SA – Arid Lands department who brought the cochineal that we used and stayed and worked with us for 2 days. Claire also took with her a load of fresh cactus segments to continue the cochineal breeding program at Pt Augusta.

The trip proved to be a successful one with 268 cactus plants dealt with during the trip. They ranged in size from single segment plants (a fallen segment that had recently rooted and established itself) to monsters standing up to 1.5m tall and 1.5 – 2 m across.

This year we concentrated more on the ridges and walking trail areas rather than the creek lines and so the method of treating the cactus was different. Instead of digging them out, we made sure they were infected with cochineal, and then “roofed” or “fenced” them.

This particular cactus spreads by 3 main methods – water, gravity and animal transfer. As it grows, the segments at the extremity of the plant break off very easily. They then float down a creek (water) – although not very likely at the moment – roll down a hill (gravity), or stick to the fur or feathers of a passing animal to be dislodged elsewhere. Each segment is covered in tiny spikes each with a barbed end (bit like a fish hook) and wherever a segment stops the spikes provide rooting points for a new plant to establish. This ability to “jump” quite long distances from a parent plant is what leads to its common name.

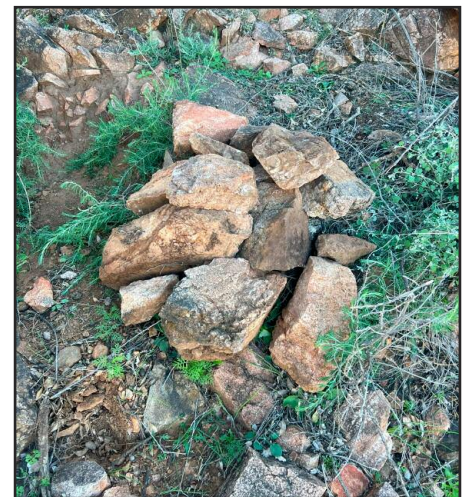
Roofing and fencing are 2 ways to prevent the spread of the cactus.



Partially Roofed



Fully Roofed



Fully Roofed

Roofing, primarily used for small plants, involves breaking the plant down and then completely covering it with rocks – there is no shortage of them on Arkaroola. Within the rock tomb, the heightened humidity favours the cochineal, and it does its job very well, while the rocks also prevent rolling and animal strike. The pictures above show a partially roofed and 2 completely roofed plants.

Fencing is primarily used for larger plants and involves “building a fence” around the plant using dead branches and bushes. The main idea here is to prevent segments from rolling down hill and also to keep passing animals at a safe distance to prevent transfer of segments on their fur or feathers.



Fenced Cactus



Fenced Cactus

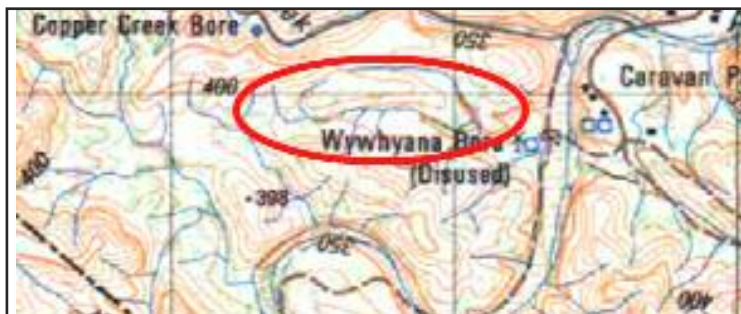


These pictures show fenced plants.

Over the first 2 days we worked as 2 teams to cover as much ground as possible.

On the first day of cactus eradication we worked on the ridge between the

Umberatana road and the Mawson Valley walking trail. Group 1 started near the Pinnacles and worked back towards the Village, while group 2 started near Last Chance bore and worked towards the Pinnacles. It was heavy going with very steep terrain.



In total on day 1 we dispatched 88 cacti.

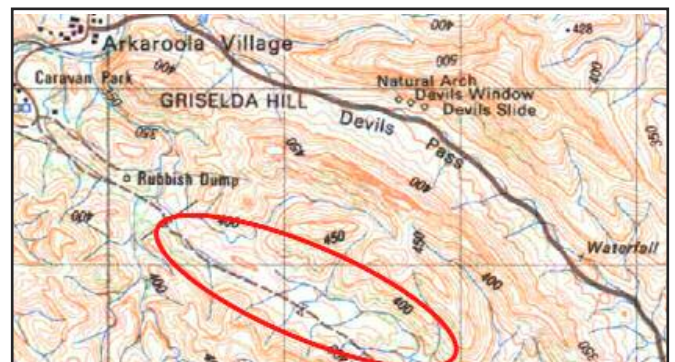
In the morning of day 2 we worked in the area between the road up to the Spriggina observatory and the Spriggina walking trail. This was an area that we considered worthy of further investigation after the

2024 trip.

In the afternoon we travelled out to the Station Back Track and covered an area about 2.5 Km long, working to about 100 m from the track.

The cactus tally for the day was 24, with only 4 found in the afternoon session.

Analysis of the days data revealed significant gaps between the two teams in both the morning and afternoon runs, so it was decided that the next day would be spent filling in the gaps.



Day 3 saw the departure of Claire McKendry, back to her real job with Arid Lands SA. She was able to take with her a substantial amount of fresh cactus to continue the cochineal breeding process for future eradication projects.

Day 3 saw a further 37 cacti treated with the majority again being in the area near the Spriggina walking trail. While those found out on the Station Backtrack were mainly uninfected and hence needed cochineal applied, about half of the cactus plants found in the areas closer to the Village were already infected with cochineal which was a pleasing discovery as it shows that the program is having an effect.

One particularly large cactus found in a creek bed on day 3 raised concerns due to its position, so it was decided that we would dig it out.

Day 4 would normally have been a rest day, but a small team volunteered to go and dig out the cactus mentioned above. With the assistance of a reciprocating saw, a mattock and a number of buckets, the cactus was systematically dismembered and its root system dug out. It was then transferred to a location well above any floodline, infected with more cochineal, and heavily fenced to prevent it from being spread by any means.

Russel Chaffey and Rob Duncan then left the group to join another volunteer group in the Gammon Range national park doing some renovations on the Idninha outstation buildings.

In the afternoon of day 4 the remainder of the group tackled a section of the Wywhyana





creek that had not been searched in 2024. The tally for the day was 15 cacti.

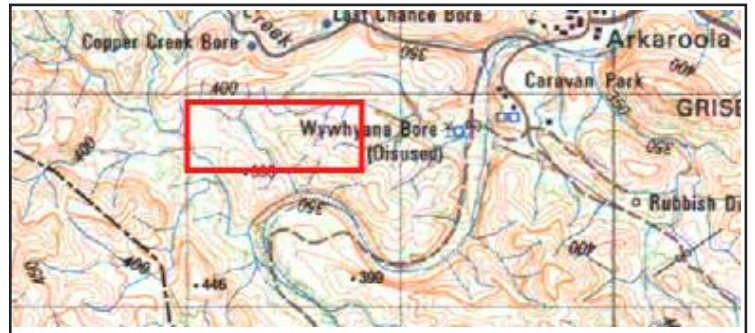
Day 5 was taken as a rest day, and Vlad Humeniuk led the group on a pleasant drive to Grindells Hut in the Gammon Range National Park.

Day 6 saw what was now a single group, due to members that had to leave, tackle a grid search of some 600 x 200 metres. Google earth made it look relatively flat easy terrain. It was Not! While we did a

pretty good job of sticking to our grid lines, rough terrain meant that walking straight lines was often just not possible.

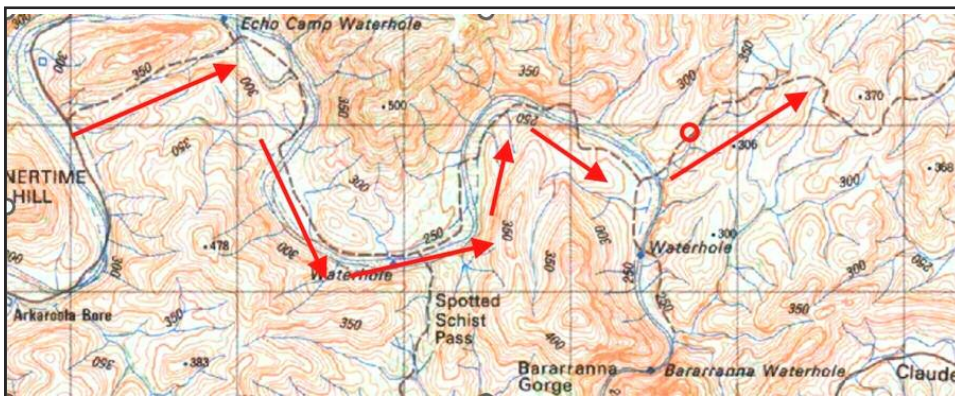
It is rumoured that the trip leader slipped on a particularly steep, shaley, rocky slope and got up much closer and more personal to a cactus than he would have liked. While it is said that an eminent surgeon was required to remove certain prickles from his anatomy, there is no photographic evidence, therefore, it didn't happen.

Suffice to say we now have first hand experience of just how nasty these cactus plants can be.



At the end of this run, due to the extreme nature of the terrain, the team was exhausted and it was well past lunch time, so time was called on the day. The tally for the day was 75 cacti though, so it was a very productive exercise. Day 7 was our final working day on Arkaroola and the team was even further depleted as the Humeniuks and Morries had to leave due to other commitments.

One of the tour guides on Arkaroola had reported a large cactus on the Echo Camp Back track, so we decided that we would try to find it and despatch it. The Echo Camp Back Track is a gated one way only track with a round trip of approximately 25 Km. We had been given permission to travel in both directions as the reported sighting was only about 2 – 4 Km in. However, after driving the first Km of the track we made the decision that going back that way without a guarantee of not meeting oncoming traffic, was not something we were comfortable with. So 25 Km round trip was the only option. As it transpired, that was a good choice as, not only were there other cars behind us, but the reported cactus was found some 6.5 Km along the track. Well past what our original turn back point was going to be.



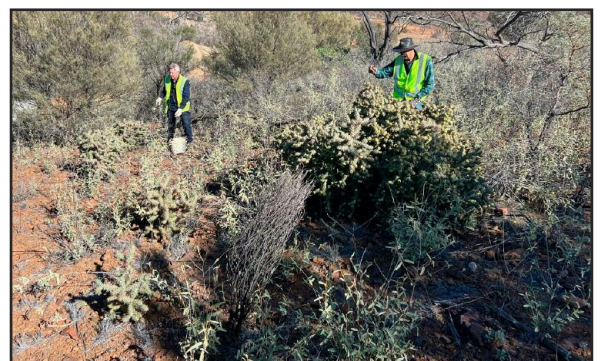
It was a monster. And in the space around it there were about 24 more cacti ranging from quite well established plants to single segment plants that were just beginning life. It was also on a very clear animal path, so the chance of spreading was high.

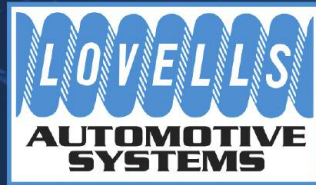
We systematically dug out all of the small single sement plants and placed them within the larger plants confines. We then applied the

remaining cochineal that we had available and then fenced the plants as well as we could to prevent animal contact. This amounted to 29 plants.

We then completed a leisurely drive back to Arkaroola Village, where preparations for the following day's departure began. It had been a fabulous and productive trip.

Graham Adams





SUSPENSION UPGRADES | GVM UPGRADES | TOWING UPGRADES | PERFORMANCE UPGRADES | CUSTOM BUILDS | ACCESSORIES

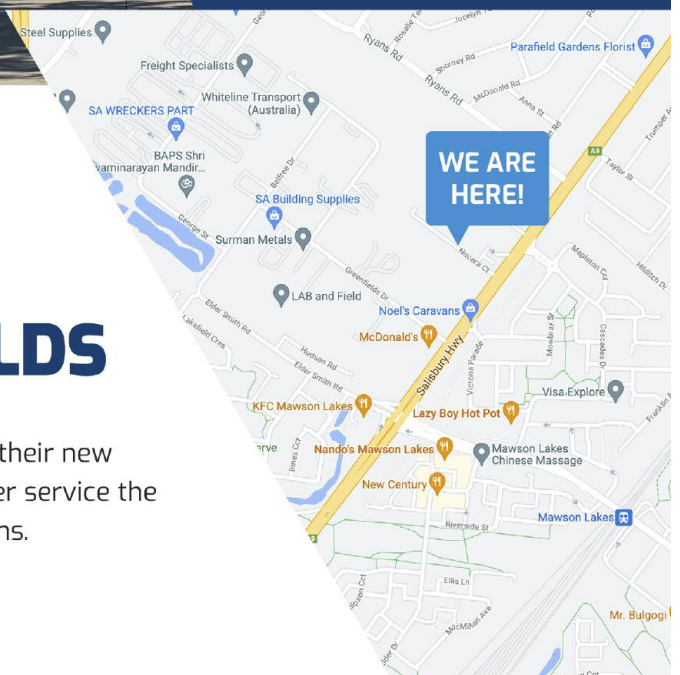


NOW OPEN!

LOVELLS GREEN FIELDS

Lovells Adelaide is proud to announce the opening of their new store at Green Fields, adjacent Mawson Lakes, to better service the needs in the north of Adelaide and the northern regions.

Want to know more? Call our team to discuss the full range of products on offer!



LOVELLS GREEN FIELDS
2 NUCERA COURT,
GREEN FIELDS SA 5107

1300 407 785
SALES@LOVELLSADELAIDE.COM.AU
WWW.LOVELLSADELAIDE.COM.AU





YOUR 4WD SETUP SPECIALISTS


Leading Brand 4WD Accessories • Standard or Heavy Duty Towbars • Rear Steps • Parking Sensors • Reversing Cameras • Electric Brakes • Snorkels • Bull Bars • Canopies • Custom Fabrication • and much more!

175 Richmond Road, Richmond SA 5033
www.allintowbars.com.au
(08) 8352 5155

ALLIN
TOWBARS

ARR THE POWER OF REDARC ECR SMARTBAR C LUTRA

BLINMAN UNDERGROUND EXPERIENCE



Tours daily between 10 am and 3 pm
 Bookings essential, closed in shoes.

P: 08 8648 4782
 Email: heritag@blinmanmine.com.au
 FB: www.facebook.com/HeritageBlinmanMine

BatteryWorld

10% OFF

FOR TOYOTA LANDCRUISER CLUB MEMBERS



POWER YOUR PASSION

13 17 60

T & C's apply - see local store for details
 SA members only. Proof of membership may be required.
 Not to be used in conjunction with any other offers.

JACKSONS
4X4 ACCESSORIES


The Trusted Landcruiser Experts



08 8532 2550 | WWW.JACKSONS4X4.COM.AU


For Sale

Tilt Fridge Slide
 to suit a 45 Lt engel fridge.
\$200 .
 Contact Graham Murray
 0468956492.



RedArc Tow Pro Elite V3.
\$200

New – Never used.
 Graham Adams
 0417 854 318




For Sale

MEMBERS VEHICLE FOR SALE

This beautifully prepared low mileage **2019 SR5 4x4 Hilux Dual Cab** is set up with high quality equipment and accessories and is ready for serious outback travel. Full equipment list refer TLCCSA Facebook or marketplace.

Asking **\$70,000** (negotiable)

Enquiries to Ray
 0422 642 943



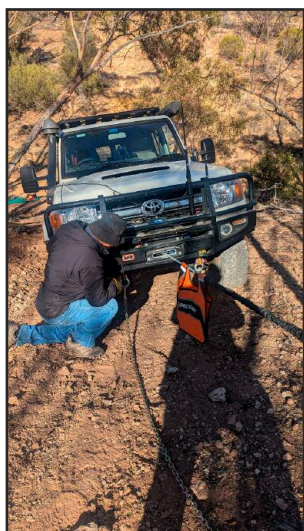
DRIVER TRAINING REPORT – MORGAN

SAT 17 - SUN 18 MAY 2025.

The most recent TLCCSA Driver Training weekend (Ascent and Descent training) was conducted at the Morgan Quarry over the weekend of Saturday the 17th and Sunday 18th May 2025. The Morgan Quarry is an excellent venue for Ascent and Descent training with wide and diverse range slopes from relatively flat to steeped, stepped, rutted and undulating. The site also has several short side slopes. In addition, the location provides opportunities for recovery (towing, snatching, winching) training and practice. This particular Morgan weekend offered Basic and Advanced Training.



The trainers and participants assembled at the ferry car park at 08:30 on the Saturday morning for introductions and /or re-introductions, handing over of paper-work and a training and safety briefing on the weekend before heading to the quarry site for some action. The TLCCSA training team for the weekend consisted of three: Geoff Green, Jason Sabeeney and Murray McClay (Lead Trainer). The participants for the weekend: Stephen and Margaret Clift, Corey Edwards, Bob and Sandy Ellis, Stephen Garland, Andrew McDonald and Cathie and Jeff Vincent. Trainers and participants had booked in to the Caravan Park for the weekend.



The Saturday driver training program ran from 09:00 to 16:00, where all participants had the opportunity to be trained, provide a skills demonstration or be assessed, based on their respective previous training experience. Morning Tea took place in the quarry pit for brief breaks from the training. On return to the Caravan Park, we gathered for Happy Hour by the river. On Saturday evening we attended the Morgan Terminus Hotel, where we had good food, drink, camaraderie and conversation.

The Sunday driving program ran from 09:00 to 12:30. A number of members towed caravans into the quarry and left directly after the conclusion of the Sunday session; several returned to the Caravan Park for a relaxing afternoon next to the river and a Monday morning departure.

Having completed the Basic Training program in 2015 /2016, I thought it was time I undertook some advanced 4WD Training. I am a strong believer in the need to refresh and update competency-based skills, especially if those skills are not being used on a regular, ie daily /weekly /monthly basis. Over the past 45 years I have renewed my First Aid Qualifications at least every three years, always picking up new information and I thought my 4WDing required a similar refresh and enhancement.

On the Saturday, under the supervision and direction of Geoff Green, I spent my time driving to most corners of the quarry, traversing a variety of ascents and descents on my way to explore the boundaries of the property. On the Sunday under the supervision and direction of Murray McClay we found a suitable slope to winch the 76 series Landcruiser up in two stages. The TLCCSA provide great feedback.

Thanks very much to Murray, Geoff and Jason for providing a great weekend of training opportunities at Morgan Quarry.

Photo's from the weekend were taken by: Sandy Ellis, Murray McClay and Cathie Vincent.

Bob Ellis



Bendleby Ranges Trip Report

6 - 9 June 2025



The Home of Adventure

PARTICIPANTS

James and Lin Edwards – Trip Leaders

Vlad and Pam Humeniuk

Malen Rumbelow and Jan Muegel

Peter and Sue Bradley

Stephen and Mary Arnold

Jason Sabeeney

Andrew Vidale

Cory Edwards

David Burges

Marcus and Charmaine Fenske

Trevor and Katherine Duggan

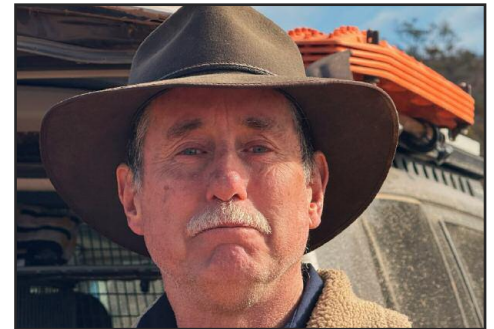
Phil and Karen Ahrens

Vladimír and Denise Malcík

Jeff and Cathy Vincent

David Powell

Tim Welch



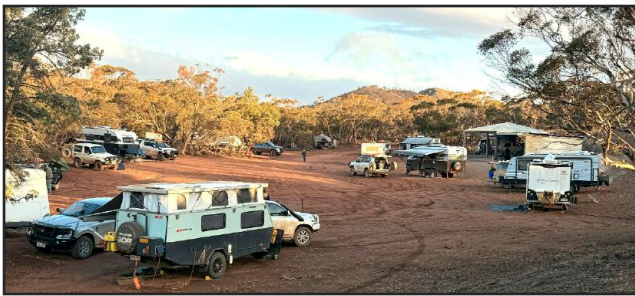
The Face of Adventure

ABOUT BENDLEBY RANGES

Bendleby Ranges is a working sheep station, combining sustainable farming with adventure and eco-tourism on 37,000 acres, situated in the Southern Flinders Ranges, some 330km from Adelaide. Bendleby Ranges has over 210km of self-drive 4WD tracks to suit a wide range of driving ability, from the novice to the very experienced.

TRIP OUTLINE

Day 1 – Thursday 5 June 2025



Whilst officially the trip was scheduled to start on Friday, some of us arrived a day earlier, on Thursday. On arrival, everyone was pleasantly surprised by the Lynchs Park Campground, situated in the Hungry Ranges on the Bendleby property. The TLCCSA had this entire spacious camp, easily capable of accommodating comfortably up to 25 caravans, to ourselves. A huge shed with a firepit and an ample supply of firewood became a natural gathering place in the campground, where, after setting up camp we all gravitated to for a happy hour.

Day 2 – Friday 6 June 2025

Throughout the day and well into the evening many more of our members continued to arrive and set up their camps. Those of us, who arrived the previous day, had an excellent day of 4x4 driving in the Bendleby Ranges, under the leadership of Jason Sabeeney. Jason picked for us great tracks with excellent views of the property and the surrounding area.

The tracks provided a good introduction as to the driving conditions we could expect to encounter over the next few days. The terrain was rocky, with steep ascents and descents, requiring us to select low range and locking our differentials. Most of us lowered our tyre pressures before we left the camp in the morning. The day was marked by strong winds, which only became stronger, the higher we drove, reaching almost gale strength at times, but overall, a great day for all of us.

After a most enjoyable day of exploring the tracks, we were delighted to arrive back to the camp, greet the remaining members who arrived during the day and have our customary happy hour, sitting by and enjoying a roaring campfire.

Day 3 – Saturday 6 June 2025

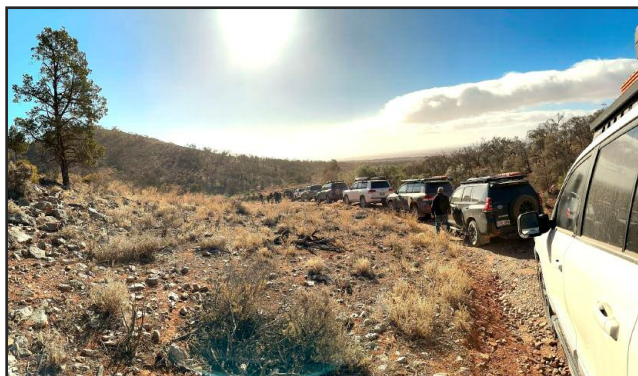
Today, having the full complement of fifteen vehicles and twenty-three participants we separated into two groups.

Group 1, under the leadership of James and Lin Edwards explored the Hungry Ranges part of the Bendleby property. We set off early at 8am, hoping to avoid other groups that could be travelling along the same tracks, as was the case in 2024. With hindsight, it was an excellent decision, as we had all the tracks to ourselves.

The Hungry Ranges have the more challenging and technically difficult tracks, culminating in the famed and feared "Billy Goat and Pat's Peak" tracks, rated 10 out of 10, on the difficulty scale.

To get to the Billy Goat track, we drove along the Ridge Top track, quite a 4x4 challenge in itself with spectacular views, before arriving at the bottom of the Billy Goat. We nourished ourselves with morning tea, calmed our nerves and set out on the Billy Goat adventure. Whilst the track is truly challenging and difficult, with James' patient and expert guidance, we all made it safely and in good spirits to the top and breathed a collective sigh of relief!





It was a great experience, made possible by James guiding us through this challenge, but it also speaks well of the quality of the driver training TLCCSA provides to its members. Having regained our composure, we continued to enjoy the other beautiful and scenic tracks, which after the Billy Goat seemed like “a walk in the park” – not really.

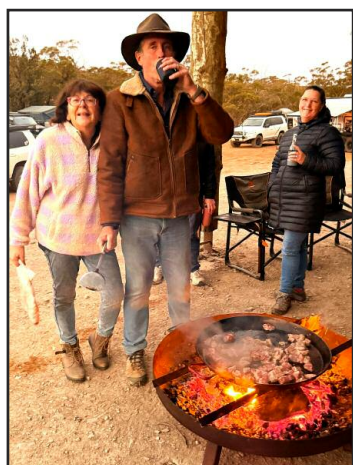
Group 2, under the leadership of Andrew and Pam McDonald set out at 8.30am to explore the Bendleby Ranges section of the property. The drive included a number of the tracks, such as the Gum Creek Drive, the Link Track, Monument Loop and the Kokoda Trail.

It was a COLD, DUSTY and WINDY affair. Pam (legend wheel lady - driving), Andrew calling the shots, under Pam’s close adult supervision. Thanks, Pam for the Cupa and Chupa-Chups at the gates - Burgo tail end Charlie.

Gum Creek Track, then up to the WINDY lookout. WATCH YOUR DOORS WHEN OPENING!! Marchant Hill lookout – only one track up and down. Many cars waiting had to get off rocky track to allow down traffic.

Courageous Pam tackled the RED Link Track, from Gum Creek Drive.

WOW – despite her best driving skills and Andrew and Jason filling rocks under front wheels dangling in the air, it was decided that track wasn’t worth the risk and the potential damage – great call!



Back to camp – after a Great Day, thanks to Andrew calling – and Pam’s driving skills. Upon both groups arriving back at the camp, it was time for the social main event of the trip, the cooking of the Paella. Traditionally cooked in a large, shallow pan over an open flame, paella is known for its distinctive saffron-infused rice and a rich mix of yummy ingredients.

Everyone was absolutely astounded by the gigantic pan and a fireplace Lin and James brought with them for the occasion. The cook up took several enjoyable hours. The result was unanimously declared a great and yummy success!



Day 4 – Sunday 7 June 2025

Sunday greeted us with wet and cold weather. Undeterred, we once again formed two groups and this time Group 1, under the leadership of Pam and Vlad Humeniuk explored the Bendleby Ranges. Group 2, under the leadership of Lin and James Edwards went to explore the the Hungry Ranges. This was arranged such that all participants had the opportunity to explore both the Bendleby and the Hungry Ranges.



Both groups bravely explored the tracks and endured the cold, the wet and the wind. Ultimately, good sense and good trip leadership prevailed and for safety and comfort we headed to the Orroroo pub for an excellent counter lunch.

Despite the cold weather and the rain, the evening back at the camp was once again a great social occasion for all of us, with many tails of adventure exchanged and no doubt exaggerated, in a congenial atmosphere.

club merchandise

PRICES SUBJECT TO CONFIRMATION



Bisley L/S shirt \$49.45



Polo Shirt \$30



Rugby Top \$47



Flash Jacket \$52.50



Reversible Vest \$60



Stadium Jacket \$77.50



Closed Frt Shirt \$47.45



Beanie \$17.50
Knitted Acrylic Navy



Bucket Hat \$17.50



Cap \$17.50



JB'S Polar Vest \$33



Full Zip Polar \$42.50



Half Zip Polar \$40.50



Drill Shirt \$46.45



Metal Club Badge \$20

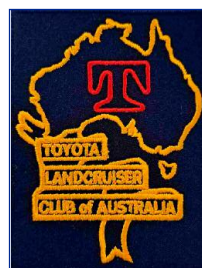
GET DECKED OUT !

Prices include embroidered club logo.

Add your name for \$5.00, Add State Logo for \$7.50

All orders require payment either at the next General Meeting or EFT to the **TLCCSA - MEMBERSHIP** account (pg 22) and don't forget to include your surname-initials/apparel in the detail-reference field. Please see Carola Sanders at the next meeting.

Sizes: Mens: S, M, L, XL, XXL, XXXL.
Ladies: 6, 8, 10, 12, 14, 16, 18



Cloth Badge
\$15.00



Cloth Badge
\$8.50



Sand Flag \$10
Run Out Sale

For Sale

Camper Trailer 2010 Trak Shak Majestic (\$10,000 neg)

Well-equipped fully off-road Aust made camper trailer.
2x Engel fridge freezers working perfectly.
2x upgraded solar panels with vitron blue controller and 240v charge controller. New 150 ah battery deep cycle battery in box. HONDA 2kva generator. Boat unloader and motor mount. 9 x mixed jerry cans for water & fuel. 5x Internal Storage tubs. Removable full kitchen with gas cooker and water pump. Internal marine carpet. Solar Blanket Kids retreat. Extra annex. Treg hitch. Spare axel hubs and tyre. Mesh gazebo to annex. All canvas in excellent condition
Ben 0499 366140



For Sale

2004 Landcruiser 4.2 litre TD

367,000K Set up for touring
Service records, fuel 180 litres Good
AT Tyres/ 2 spares GVM upgrade, TPMS, 9500kg winch, ARB compressor, front and rear airlockers. Full inventory of safety and recovery equipment. HF radio and 2 UHF radios. First aid kit including defibrillator.

Carry-Me camper,
Heavy duty canvas.
2x 120 AH batteries
and on-board charger.
150 litres of water
storage, 2 ARB
fridges, Full tray-width
aluminium tool box.
\$52,000 ONO

Full list of extras and more info contact Lange Powell at powellan@internode.on.net.



HOW MUCH DO YOU TRUST YOUR CLUTCH?



INTRODUCING THE FORTIFIED PLUS CLUTCH

In the split second between changing gears on a steep incline, when there is no room for error, will you be worried about losing control, or confident that you're fitted with the right clutch?

With today's generation of 4WD enthusiasts who love to challenge their vehicles and themselves, the forces moving through your clutch system have never been stronger or more important.

Originally engineered for armoured vehicles, the **TERRAIN TAMER FORTIFIED PLUS CLUTCH** provides up to 80% increase in torque capacity, and revolutionary Clutchtex Kevlar Technology offers 2-3 times the longevity in the clutch disc, as well as significantly smoother engagement without shudder.

For information visit terraintamer.com or call **1300 888 444**





Day 5 – Monday 8 June 2025

Ice everywhere! The morning greeted us with frosted windscreens and negative 2 degrees Celsius. A number of participants departed in the morning to return home and to start their working weeks. James and Lin Edwards, arranged for a quick drive through the property, to give those who missed out on some of the tracks the opportunity to experience them.

SUMMARY

Excellent choice of a destination, great 4x4 driving, great company. An outstanding trip enjoyed by all. Many, thanks to James and Lin Edwards for organising and leading the trip.

Vladimir Malcik



Trips Medical and Emergency Information

- A new form has been developed and now available on our website via the "Members Zone"
- Each person is to complete two forms with **UPDATED** and **LATEST** data
- Place each form in separate sealed envelope with name and location of your First Aid Kit.
- Copy 1 stays in your vehicle
- Copy 2 is given to the Trip Leader at start of event

We recommend every member do a first aid course and have a comprehensive personal first aid kit.

Members are reminded that they are personally responsible for any cost of emergency treatments or transportations needed.

Please consider a confidential discussion with your trip leader if your condition could become critical during the trip.

Trip leader returns envelopes (unopened) unless they are needed to treat you.

Historic Registration Log Book Signing

A reminder to all members that own a vehicle with club historic registration.

Log books expire on July 31st and must be signed by either Darryl Royans or Michael Polacek prior to that date. Members must be financial for the 25/26 year. If a new log book is required a \$5 fee applies.

Darryl will be available for signing at the July meeting. Alternatively books can be mailed to Michael Polacek, 1 Allenby Ave, Millswood. SA 5034 with a stamped self addressed envelope.

TLCCSA - Paying by Direct Debit or Credit Card

1. Instructions for those paying **MEMBERSHIP or TRAINING FEES** by direct crediting (excluding credit cards)

- Please ensure when inputting your deposit transfer that your surname plus initials are included in the detail / reference field.
- Once receipt number is issued for the deposit please email this receipt to the TLCCSA Treasurer, treasurer@tlccsa.asn.au

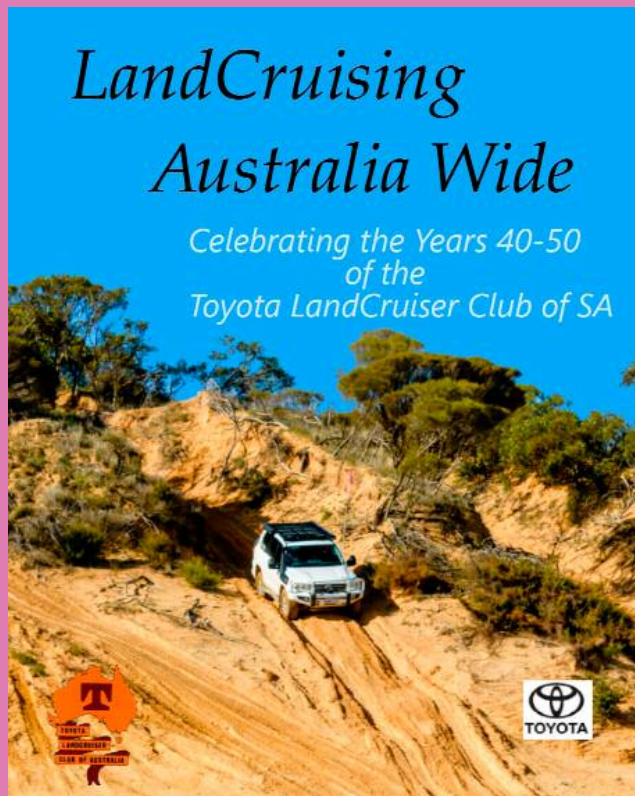
Bank Beyond Bank, Modbury
Account Name Toyota Landcruiser Club of Australia (SA) Inc
BSB 325 - 185
Account number 0403 8506

2. Instructions for those paying **MEMBERSHIP on the TLCCSA Website** by credit card or Paypal

- Go to the Club Web page www.tlccsa.asn.au and effect your membership renewal. Click on the member's login at the very top that will then take you to the "Members Zone".
- Click on membership renewal and fill in your credit card details and submit. An email confirmation will be sent to your email address.

3. Instructions for those paying for **TLCCSA SOCIAL CLUB ACTIVITIES** by direct crediting (excluding credit cards)

Bank Beyond Bank
Account Name Toyota Landcruiser Club of Australia (SA) Inc Social Club
BSB 325 - 185
Account number 0403 9446



50th Book Launch and Purchase Covering the life of the Club from 2011 to 2021

It is exciting to be closing in on the latest book launch which will be of particular interest to members in the club prior to Dec 2021. The latest book picks up where the first book left off, which captured our first 40 years. This latest book captures the next 10 years to 2021 which was our big 50 celebration year.

Tickets are on TryBooking giving you the option of:

- * Buying a subsidised copy for **\$15** that you pickup at a club meeting or launch (1 per membership)
- * Buying a subsidised copy to be posted (\$25) to you as you cannot pick it up.
- * Buying Extra copies (\$28 if picked up or \$38 if posted)
- * Attending the Launch (max 200 people – 2 tickets per membership)

The launch of the Club's second history book is planned for **Friday 12th September at Cornes Toyota Showroom, Hawthorn**, at 6 pm.

Refreshments and drinks will be provided. Orders for the book must be placed prior to **July 31st**.

<https://www.trybooking.com/DCCYI>

NEW

ELECTRIC BUG BRINGS YOU THE

OVERLANDER



BY GARMIN



THE FEATURES

- Use the Garmin Explore™ app to easily sync¹ your waypoints, tracks and routes across your Overlander device, smartphone and desktop
- Use the Garmin Explore™ app to download additional maps, such as satellite imagery and USGS quad sheets on 64 GB of storage
- Preloaded with iOverlander™ points of interest and Ultimate Public Campgrounds, so you don't need a cell signal to find the best-established, wild and dispersed campsites
- Powered magnetic mount that comes with a suction cup or RAM ball compatible adapter
- Integrated pitch and roll gauges help you and your vehicle navigate difficult terrain
- Preloaded street maps with turn by turn directions for Australia and preloaded topography, including public land boundaries,
- 4X4 roads, forest service roads, waterways, trails and other land use data



PAIR IT WITH THE INREACH MINI AND USE IT TO TEXT

The Overlander can also connect to your phone through your InReach Mini and allow texting and phone calls. From anywhere on the planet, InReach Mini is your go to connect for maintaining off grid contact.



BC35 REVERSE CAMERA



A quality backup camera like the Garmin BC 35 can significantly enhance rearward visibility for drivers and, thus, help minimize the risk of "blind zone" accidents whenever your vehicle is moving in reverse. Pair it with the Overlander for a Dynamic Duo

GARMIN

SPECIAL GARMIN DEALER OFFER

ELECTRIC BUG

LEADING GARMIN GPS DEALER AND GPS EXPERTS
BRING THIS IN FOR EXCLUSIVE DISCOUNTS AND ADVICE



Find us
on facebook

www.electricbug.com.au
08 8346 9234



199-203 Torrens Rd, Ridleyton SA 5008

10% OFF ON ANY GARMIN PURCHASE IN STORE